

PRODUCT CATALOGUE

2025



Cigüeñal · Коленвал · Crankshaft
Virabrequim · Kurbelwelle



**PRECISION
ENGINEERING &
POWERING THE FUTURE
SINCE 1989**



We have been accredited with ISO 9001 certifications for more than a decade for continuous manufacturing excellence.

We have been a IATF 16949:2016 accredited company for almost a decade for offering Precision Engineering Solutions of the Highest Standards to our customers.



We have been accredited with the ISO 14001:2015 (Environmental Management System) certification in the year 2020 owing to continuous effort & commitment to an Environmental Conscious Culture at the company. We have targeted to be a Carbon Neutral company by the year 2030 & the steps towards that goal have been initiated from 2020. A large emphasis has been put on Wind & Solar Energy amongst other renewable sources. A Blueprint has also been laid out for our very own Solar Farm to fulfill the needs of our Manufacturing Plants.

We take our management systems for occupational health and safety (OH&S) very seriously at our company. The members of our team are truly our biggest assets & to inculcate a culture for their Health & Safety is our biggest priority. We were accredited with the said certification in 2020 which is a proof of our strong emphasis on the wellbeing every member of the Balu Family proving a very safe & healthy working culture & environment.



WHO WE ARE

We have become a name symbolizing quality & excellence in the field of crankshaft manufacturing & precision machining since 1989

Our in-house capability & state of the art automotive engineering enables us to manufacture any type of crankshaft in a large range of applications namely **Agriculture** : Tractors, Harvesters | **Heavy Duty**: Trucks, Buses, Trailers | **Automotive** | **Generators**: Industrial, Standby, Home backup, Portable | **Oil & Gas** : Pumps & Compressors | **Refrigeration** : Compressor | **Industrial** | **Off Road & On Road** : Motorcycles, Carts, Jet Skis | **High Performance** : Racing Series | **Locomotive** | **Marine** | **Aerospace**.



We have developed a very extensive range of forged crankshafts for leading Original Equipment Manufacturers within India and the rest of the world & a strong aftermarket presence in over 80 countries. The ISO/TS16949:2009 accreditation of our units in 2012 by TUV Nord Cert GmbH added to our competitive edge making Balu one of the very few companies to have this accreditation in the field of manufacturing crankshafts.

Balu is now an avant-garde manufacturer of fully finished and semi-finished forged crankshafts and other Forged Components. Our incremental innovation & continuous strive to improve has awarded us by making us the only company to have the capability to manufacture components conforming to the New Emission Regulations & the New Energy Vehicles.

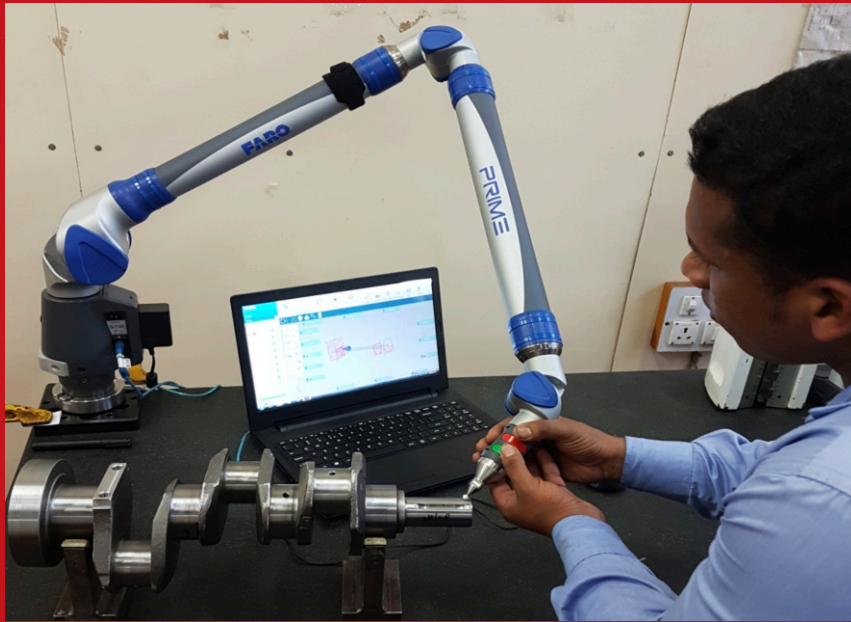


The manufacturing of the crankshafts is done with the latest equipments, instruments, technologies and highly skilled workforce which provide exceptional control over the entire process of manufacturing the crankshafts & strict adherence to Six Sigma & 8D disciplines. We have become the supplier of choice of major OEM's not only in India but around the world due to our technological advantage and the highest standards of quality in the industry. All the crankshafts are manufactured to exact O.E specifications and on CNC lines to ensure precision at every stage.

We have continually strived to broaden our manufacturing base and with the acquisition of the state of the art machining lines from Poland in the year 2006 and as recently as 2011 from France, our capability has expanded to produce crankshafts up to 2.5 meters in length and installed capacity has increased to 30,000 fully finished crankshafts per month.

CORE COMPETENCY

Unifying the Capability
of the Organization



The Core Competencies which distinguish us from our competitors & the pillars which have ensured the building of a strong brand worldwide are as below:

Complete CNC manufacturing capability

Over three decades of experience in Precision Engineering

Diversified Product Portfolio & Applications

Supplier of choice for OEMs

State of the Art Manufacturing set up

In-house tool room

In-house Metallurgical lab

Dedicated R&D Facility

Strong Emphasis on New Energy Vehicles & Components

All machining & forging operations in-house

Well established brand worldwide

Fully Integrated Plant providing full supply capability to its Geographically dispersed customers from concept to Product design, engineering, manufacturing, testing & validations, Highly skilled work force with a technologically advanced plant

In-house capability to manufacture a product from 2 Kgs to 1000 Kgs & upto 3 meters long

Supply base comprising over 25 OEMs both in India & overseas

Aftermarket customer & distributor base in over 86 countries





Billet Cutting



Forging Hammer (16T)







Tool Room & Die Manufacturing



Vertical Turret Lathes



Tool Room & Die Manufacturing



Raw Material



Crack Testing



Grinding





Heat Treatment



Heat Treatment



Heat Treatment



Milling & Turning



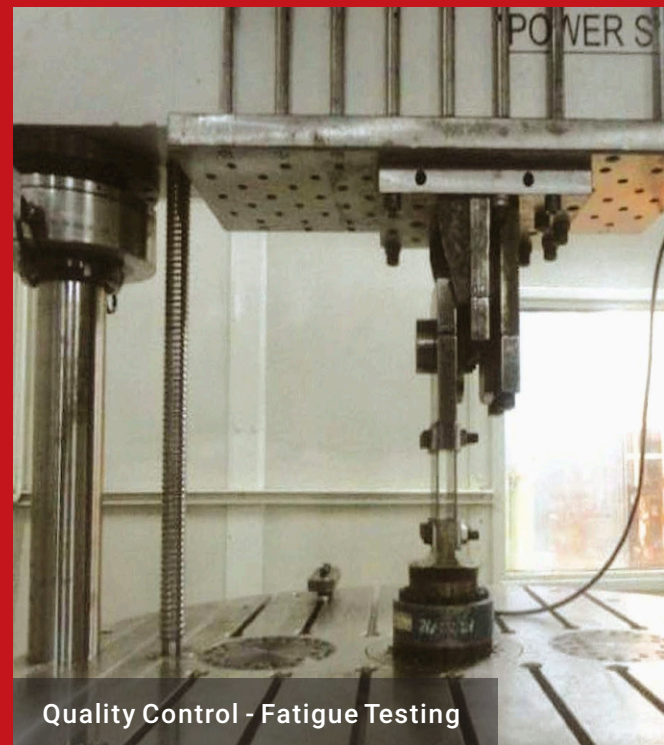
Milling & Turning



Rough Machining Overview



Quality Control - In-Process Inspection



Quality Control - Fatigue Testing



Finish Machining Overview



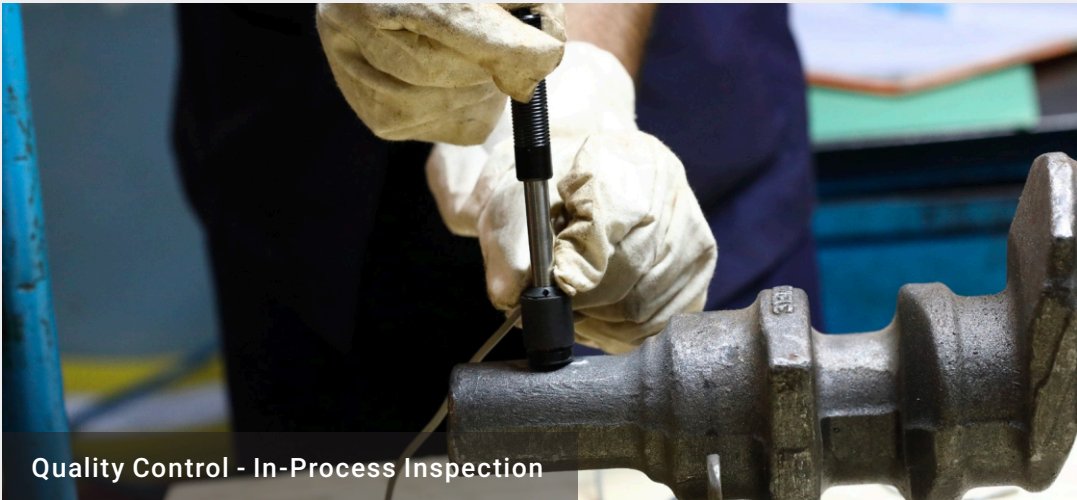
Post Grinding



Post Grinding



Quality Control - Inspection



Quality Control - In-Process Inspection



CBN Twin Wheel Grinder



Super Finishing



Quality Control - Metallurgical Lab



In-House Tool Room



Splines/Serration (Deep Rolling Process)



CBN Grinder

CUTTING EDGE TECHNOLOGY UNMATCHED STANDARDS OF QUALITY



CNC GRINDING



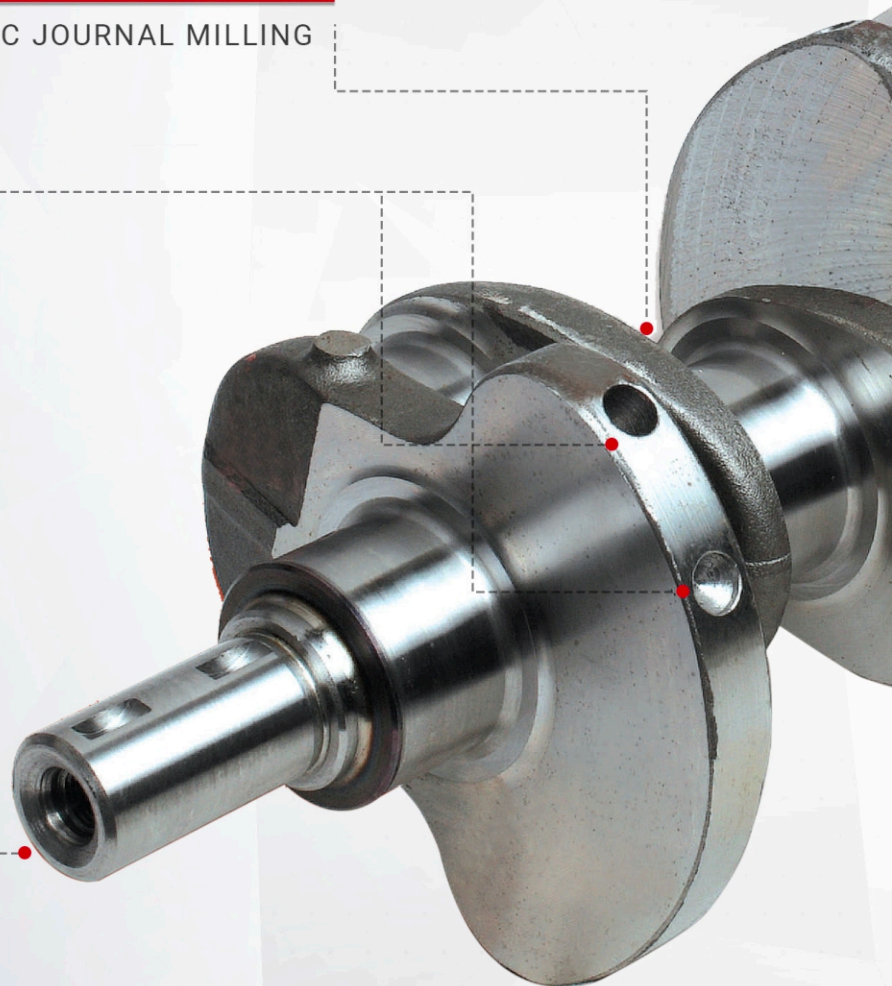
CNC JOURNAL MILLING



DYNAMIC BALANCING



MASS CENTERING



INDUCTION HARDENING



POST GRINDING OPERATIONS
FLANGE HOLE GEAR END
& TAPPING

SUPER FINISHING



OIL HOLE DRILLING



HELLER PIN MILLING

STATE OF THE ART
AUTO CNC LINES

Defence project

The Indian Government has given a great impetus to domestic factories to take part in Defense Production. A large part of the procurement program has also moved to the Private Sector with a considerable investment made by the Indian Industry to support the Indian Defense Production.

The Government has also in 2020 barred a majority of Import Procurement by the Defense Companies giving a further rise to Home Grown Companies actively participating in the Indian Defense Sector. There has been a strong focus at Balu Forge towards readiness for the needs of India as well as Global Defense Organizations. Balu Forge is already an approved vendor to a majority of the 41 Ordnance Factories in India.

A large part of the Capital Investment for the next 10 years is towards Defense Production with also key Joint Ventures/Technology Partnerships in the pipeline. The key areas planned in the coming years are Artillery, Undercarriage parts for Armored Vehicles, Weapons & Ammunition for Light & Heavy Infantry and Forged & Machined Components for the Engine Division.

Balu Forge has also secured & successfully supplied for over 5 years to Defense Forces in two prominent European Countries and executed supply as a single source to these nations. There will continue to be a strong focus on further expanding the reach & customer base amongst more Defense Organisations globally.



Crank Shaft



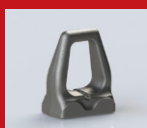
Road Wheel Arm



Crank 690



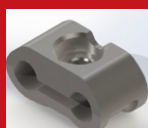
Track Link



Track Guide



Shoe



Clamp



Flange

New Energy / Mobility Solutions

At Balu we endeavor to be ahead of the curve in the New Energy Vehicle Space with a clear emphasis & focus on Development of Efficient & Innovative Solutions for the New Energy Vehicle Sector. We also have a Dedicated vertical, Naya with a clear focus on the Developments of the New Mobility World. The New Era has moved from Conventional Mobility Solutions to a range of Potential Drivers for the Future may it be Hybrid/ BEV/ Hydrogen Powered Vehicles. It is imperative for an incumbent to have a well-defined strategy for the way ahead where the changing landscape will offer a large number of Opportunities.

In one of the oldest Industries in the world, the laggards are the Automotive Incumbents & due to the large Capex already incurred in the Conventional Automotive space, it is generally far more difficult to shift to the New Era that is in front of us.



We see this tipping point as the single largest opportunity available for our company where we have the right balance between the Conventional Automotive & the New Era which is in front of us. It is not only imperative for companies to stay relevant but also shift their focus from their Conventional Cash Cows to Large Growth & future stars.

The Larger drivers & key pillars are Light Weight & Efficient Solutions for the New Vehicle Architectures. Being a Company with decades of experience in Precision Machining & Metal Forming, we have used this to our advantage to offer a range of products for the New Energy Vehicles.

Product Range: Our Solution Ranges from a range from products in the through the Space of BEVs/PHEVs/Hydrogen Vehicles. The process involved conventional automotive excellence partnered with the incremental innovation to offer minimum weight, maximum load-bearing capacity, high reliability & overall cost-effectiveness.



Rotor Carrier
Electric & Hybrid Vehicles



Main Drive Shafts
Electric Vehicles



Toothed Shaft
Electric Vehicles



Eccentric Shafts



Shaft
Hybrid Vehicles



Transmission Shafts
Electric Vehicles



Drive Shafts
Electric Vehicles

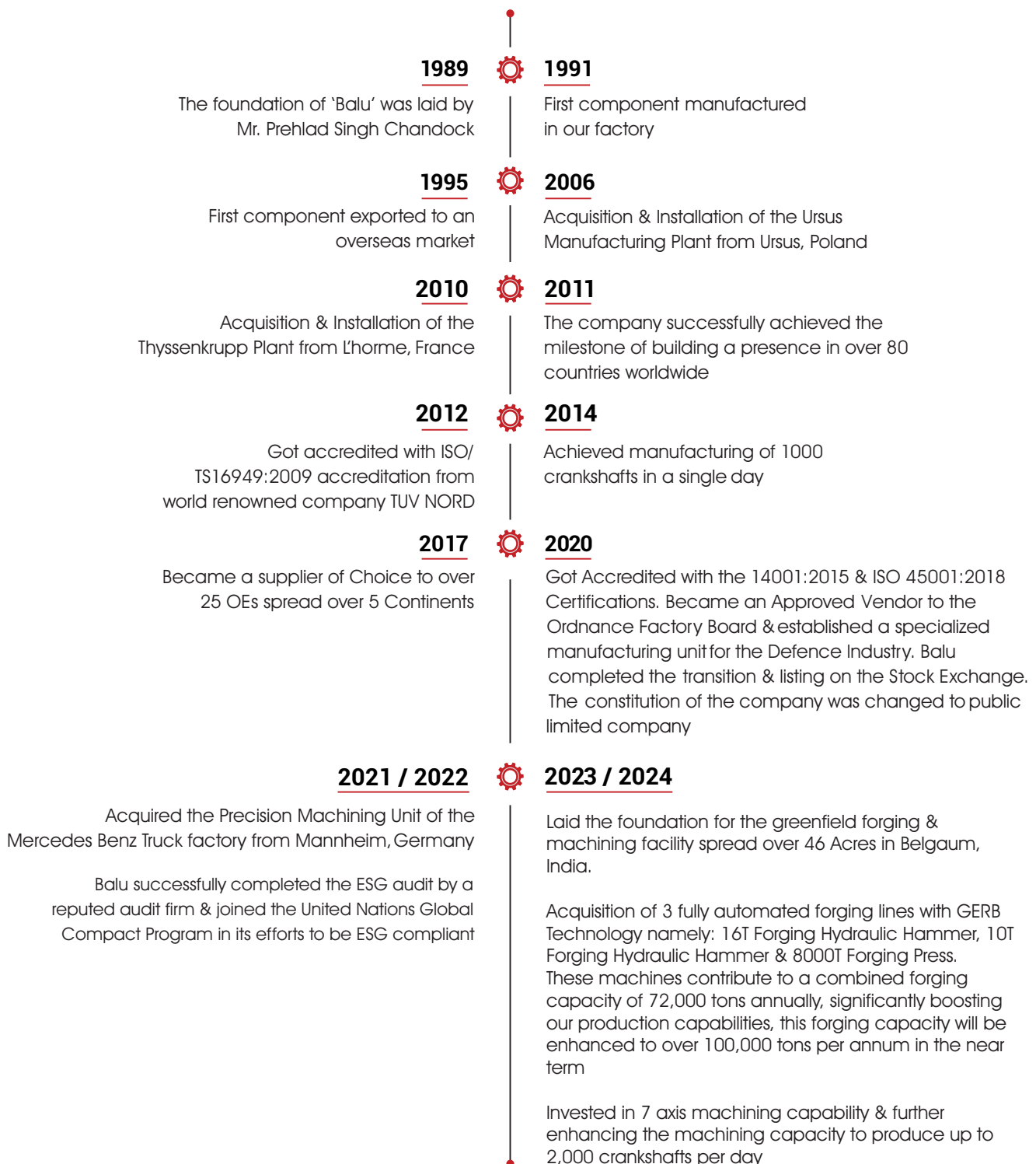


Rotor Shafts
Electric Vehicles

History

How We Started Balu

We had a humble beginning in the year 1989 in Belgaum, India. The initial set up was for manufacturing of crankshafts for single cylinder & two cylinder with a limited workforce. Within the last decade the company is supplying to over 25 OEM companies and the aftermarket presence has since expanded to over 80 countries. In 1989, we were the first company in India to mass - produce Crankshafts suitable for Tractor, Trucks and Passenger car applications. Two decades later we have gained an excellent reputation in the world market with over 4 manufacturing facilities. The modern era of Balu upholds the reputation of durability by manufacturing Crankshafts only out of Forgings & precision components conforming to the New Emission Regulations & Mobility / Energy Space.



INDEX

DESCRIPTION
PAGE NO
DESCRIPTION
PAGE NO

1	Allis chambers	1
2	Armstrong	1
3	Case / international Harvester	1 - 2
4	Caterpillar	2
5	Cummins	4
6	DAF	4
7	David Brown	4 - 5
8	Deutz - Magirus	5
9	Detroit Diesel	6
10	Doosan	6
11	Ebro Fordson	6
12	Eicher canter	6
13	Erkunt	6
14	Fiat Iveco Tractor	7
15	Ford	8
16	Hatz	9
17	Hindustan	9
18	Hindustan super	9
19	Hino	9
20	Hyundai	9
21	Ifa	10
22	Isuzu	10
23	Jaguar	10
24	Jcb	10
25	John Deere	11 - 12 - 13
26	Kawasaki	13
27	Kirloskar	14

28	Komatsu	14
29	Kubota	14
30	Lada	14
31	Land rover	14
32	Leyland	15
33	Lister petter	15
34	Lombardini	15
35	Long tractor	16
36	MWM	16
37	Mack	16
38	Mahindra and Mahindra/ International Harvester	16
39	Mahindra and Mahindra	16
40	Mazda	17
41	Mercedes - Benz	17 - 18 - 19
42	Mitsubishi	19
43	Perkins	20 - 21 - 22
44	Romania / UTB / Universal	23
45	Scania	23
46	Sonalika	24
47	Steyr	24
48	Suzuki	24
49	Tata	24
50	Toyota	24
51	Ursus	25
52	Volvo	25
53	Willys jeep	25
54	Zetor	26

ALLIS CHAMBERS

FORGED

REF. NO.	ORIGINAL PART NO.	MOTOR & ENGINE	CYLINDERS	DESCRIPTION / REMARKS
AC01	70280077		3 CYL	ALLIS CHAMBERS 160
AC02	71005059		4 CYL	ALLIS CHAMBERS 170, 175

ARMSTRONG

FORGED

REF. NO.	ORIGINAL PART NO.	MOTOR & ENGINE	CYLINDERS	DESCRIPTION / REMARKS
ARM01	SL01 11 301 C		2 CYL	ARMSTRONG SIDDELEY WITHOUT COUNTER WEIGHT 20HP

CASE / INTERNATIONAL HARVESTER

FORGED

REF. NO.	ORIGINAL PART NO.	MOTOR & ENGINE	CYLINDERS	DESCRIPTION / REMARKS
IH01	3110995R91 / 05700AB / 247-5143 / 751303/ 751303R2 / 751303R3 / 751303R5	D154, 154 C.I.D. 2.5 L D165, 165 C.I.D. 2.7 L D171, 171 C.I.D	4 CYL	B-275 D-154 BDI 54, 144, 364, 384, 444 Tractors 2424, S, SC, SE Tractors, 780, 880, 885, 4600 Tractors
IH02	3144626 / 3132752R3 / 2744406R1 / 182752R2 01 5C1 / 015C11089 / 247-5170 / 37CR4 / 6719N / IH625R2	D-239, DT239 239 C.I.D. 3.9 L	4 CYL	WITH BALANCER GEAR 544 / 684 / 724 / 744 / 784 / D239 574, 674, 685 Backhoe685 Tractor, TD7, TD7E, TD8C Crawler Tractors, TD8 Dozer
IH03	3228376R91 / 218528R2 / 218528R3 / 218528R1 / 528R2-79 / A09-7292 / 247-513	D-268, D268, DT268 268 C.I.D. 4.4 L	4 CYL	WITH BALANCER 51 OB Loader Neuss Diesel
IH04	3132968R91 / 1329196CI	DT-206	4 CYL	WITH BALANCER GEAR 15M, 654, 554, 584, 624
IH05	3136036R95 / 3059514R1 / 6791N	D-358 / DT 358 5.8 L	6 CYL	LOADER H 65C WITH COUNTER WEIGHT 826, 886, 955XC, 1420, 28263088, 3288 Wheel Tractors, Neuss Diesel
IH06	J908031 / J918323	4-390, 4T-390 239 C.I.D	4 CYL	
IH07	3907804 / 3929037 / 3907604 / 3908032	6-590, 359 C.I.D	6 CYL	
IH08			4 CYL	AVJ70 (Agricultural Tractor - AVJ Series) JX75 (Agricultural Tractor - JX Series) JX80 (Agricultural Tractor - JX Series) JX85 (Agricultural Tractor - JX Series) JX90 (Agricultural Tractor - JX Series) JX95 (Agricultural Tractor - JX Series) VJ70 (Agricultural Tractor - VJ Series) VJ80 (Agricultural Tractor - VJ Series)

CASE / INTERNATIONAL HARVESTER

FORGED

REF. NO.	ORIGINAL PART NO.	MOTOR & ENGINE	CYLINDERS	DESCRIPTION / REMARKS
IH09			3 CYL	JX1060CJX55 (Agricultural Tractor - JX Series) JX60 (Agricultural Tractor - JX Series) JX65 (Agricultural Tractor - JX Series)
IH010			4 CYL	CX100, CX70, CX80, CX90, MX 100 C, MX80 C, MX90 C

CATERPILLAR

FORGED

REF. NO.	ORIGINAL PART NO.	MOTOR & ENGINE	CYLINDERS	DESCRIPTION / REMARKS
CAT01	1W9771, 4N1112, 4N0012, 4N111X, 6N8290, 1W0400, 4N0111, 4N1111, 7N5137, OR1206, OR1209, OR5024, OR5164, OR5474, OR5560, 1W0400, 247-5130, 4N40012, 5430N	3204 5.2 L	4 CYL	D3, 910, 916, 926, 926E, 931 Loader Wheel Loaders: IT 12, IT 14, IT 18, IT 28 WITHOUT GEAR
CAT02	4N7692, 2P6217, 4N7694, 9S771, 2W7960, 2Y4504, 5S5252, OR1212, 2P7850, OR1214, 2Y4515, 3Y1613, 2P1491, OR5021, 5C3834V, 4N769, 2P1686, OR5166, 5S3835, OR5167, 2P6213, OR5169, 5S5251, 4N7695, 2P6214, OR5170, 247-5218,	3304 7.0 L	4 CYL	152.40 mm Earthmoving machinery 112F, 120G, 130G Motor Grader, 215, 225 Excavator, 518 Skidder, 920, 930, 955L, 963 Loader, 922B, 944,950 Wheel Loader, 941, 941B, 951, 951B Traxcavator, 951C, 955K, 955L Traxcavator, Crawler Tractor, Industrial, Marine Truck
CAT03	4N7693, 1P1391, 4N7696, 5C3837, 2W7458, 1W8356, 4P9857, 5S5870, 4P7827, 2P2824, 2Y4517, 5S5871, 3348389, 2P2842, 4P7458, 5Y1546, 4P7958, 2P6219, 1P1390, 6N8079, 5C3836, 2P6221, 8M4502, 9S3057, 2W7458, 2Y4507, 9S2270, SP6222, 2Y5206, OR5018	3306 B, C, DI, SP, 1-6 10.5 L	6 CYL	152.40mm Earthmoving machinery D6 / 966 C / 120 L / 140 L / D 60 SR / D6 AND / D 60 DD / 966 R / D 60 OS / 572F, 572G Pipe Layers, 621R, 627, 627B, 814 Wheel Tractor, 814, 815, 816 Compactors, 966, 966C, 977L, 980, 980B Wheel Loaders, 977K, 977L Traxcavators, D5, D5B, D6, D6C, D6D, D7, D7F, D7G Crawler Tractor, 627, 627B, 637, 637B, 637D, 639, 639D Scraper
CAT04	2327400, 2337009, 3642829, 4P9948, 1397018, 7C8214, 071Z724149, Z13071, 2218057, 7C3184, 3131-5666	3054 / 3056 4.0 L	4 CYL	127.00 mm Backhoe 416 AGCO / MASSEY: MF 5300 / 5310 tractors 416, 416C Backhoe, Cat Compactor: 426B, CB534, CB534B, CB534C, CB545 Forklifts: TH62, TH63, TH82, TH83, TH103
CAT05	4P9121, 2219360	C15/3406E	6 CYL	
CAT05A	3370201	C15 ACERT	6 CYL	

CUMMINS

FORGED

REF. NO.	ORIGINAL PART NO.	MOTOR & ENGINE	CYLINDERS	DESCRIPTION / REMARKS
CU01	3908032 / 3929037 / 3907804 / 3915259 / 3903828 / 3905619 / 3907604	6B / BT / BTA 5.9L	6 CYL	Aspirated / Turbo / Turbointercooler 6B / BT / BTAC STROKE 120.0 mm Agco - Massey: Combine Harvester MF 3640 Case: Motor Graders 845 / 888 CK / W 20E Fiat Allis: Track - Type Tractors FD 130 - 130 - Excavator Loader FX 2150 - Grader FG 140 Ford: Trucks F 12000 / F 14000 / F 16000 - CARGO 1215 / 1317 / 1415 / 1417 / 1421 / 1517 / 1521 / 1617 / 1621 / 1717 / 1721 / 2421 Komatsu: Machines for construction GDS 23 / PC 150.5 Metso Dynapac: CA compactor 25 T Muller: TM Roller 14 / T 522 / VAP 70P / 701 Crandon: Trucks off road RK 410 / 411 / 610 / 614H / 6812H Volkswagen: L Trucks 12,170 / 13,190 / 14,170 / 15,190 / 16,170 / 16,200 / 17,210 / 23,210 Volvo: grader FG 140
CU02	3918986, 3910968, 3914584, 3917443, 3917320, 3904363, 3905625, 390562, 728533	6C / 6CT C SERIES 8.3L	6 CYL	STROKE 135mm Aspirated engine / turbo / turbo - intercooler AGCO- MASSEY: Tractors MF 6350 / MF 6360 - Harvesters MF34 / MF38 CASE: Combine Harvester F 2388 - Loaders W 36B / 821B / 9.250 - Tractors MX 88 / M 270 FIAT ALLIS: Tractors FD 140 / FW 200 / GS 160 / 170 / 14C AD / FG 65 / 95 / 105B / FR 140 / 160 - Graders Loaders 160 -200 FG 160 -170 - 200 FORD: Trucks CARGO 1422 / 1622 / 1630 / 1722 / 2422 / 2425 / 2622 / 2630 / 2631 / 3222 / 4031 KOMATSU: Machines for construction WA 320 / 629 GB / D 60 / PC 150 - 153 - 155 - 200 / GD 523 - 525 - 623 / 5D 60 METSU DYNAPAC: Rollers Muller: TM Roller 17 / 26 / TC 18 NEW HOLLAND: CS harvester 660 RANDON: Trucks off road RK 628 VOLKSWAGEN: Trucks 14,210 / 14,220 / 16,210 / 16,220 / 16,300 / 17,220 / 17,300 / 17,310 / 23,220 / 24,250 / 26,220 / 26,260 / 26,300 / 35,200 / 40,300 - Chassis w / bus 18.310 VOLVO: Grader VP 720
CU04	3908031, 3907803 9P902148, 3903827 3863279, 3903830 3905617, 3929036 3863276	4 BT / 4B B SERIES 3.9L	4 CYL	STROKE 120mm Aspirated engine / turbo / turbo intercooler FIAT ALLIS: 88.4 Backhoes FB / FB 100.4 FORD: Cargo Trucks 814 / 815-Vans F 4000 / F 1000 / F 350 METSU DYNAPAC: CA compactors 50 / CC 422 132 / 221 CP

CUMMINS
FORGED

REF. NO.	ORIGINAL PART NO.	MOTOR & ENGINE	CYLINDERS	DESCRIPTION / REMARKS
CU05	2830476 / 3942441 / 3929627 / 4896766 2830477 / 2830476 / 4981642	QSB / ISBE 5.9L	6 CYL	STROKE 120.0 mm Electric engine For: Trucks : C1722E / C2422E / C2622E / C2628E Volkswagen: Trucks : 17250E / 24250E Iveco: Eurocargotector 170E 22 / 170E 25 / E 25 240 / 170 E 22 / E 25 260 / 230 22 / 230 EE 24
CU06	4925762 / 3681911 / 3608889 4923646 / 4330732	IS QSX15 X15	6 CYL	
CU07	3064291	N14	6 CYL	

DAF
FORGED

REF. NO.	ORIGINAL PART NO.	MOTOR & ENGINE	CYLINDERS	DESCRIPTION / REMARKS
DAF01	2007501 / 1684102 / 1425366	MX CF85V / XF105	6 CYL	
DAF02	1653898	85 CF / CF 85 95 XF / XF 95	6 CYL	

DAVID BROWN
FORGED

REF. NO.	ORIGINAL PART NO.	MOTOR & ENGINE	CYLINDERS	DESCRIPTION / REMARKS
DB01	K961007 / D917985 / 5321N	3.0 L	4 CYL	MODELS 990, LATE, AD 4/49
DB02	K210100 / D905196 / K179935 / 917935 / 2338423 / 961007 / 666000 / 908453	3.6 L	4 CYL	MODELS 990 EARLY, 995, 996, 1200, 1210, 1212, AD4 / 55, 12-1390, 1410, 1412 SMALL MAIN
DB03	K928415 / K928416 / 43322 / D928	3.6 L	4 CYL	LARGE MAIN AD4155, 1410, 1490, 1494

DEUTZ – MAGIRUS
FORGED

REF. NO.	ORIGINAL PART NO.	MOTOR & ENGINE	CYLINDERS	DESCRIPTION / REMARKS
DZ01		F1L 411	1 CYL	5 H.P. COUNTER WEIGHT OPTIONAL
DZ02	02233635	F1L 511 7.7 H.P.	1 CYL	COUNTER WEIGHT OPTIONAL
DZ03	04152745 / 20050551102	F2L 511 / D / W	2 CYL	WITH COUNTER WEIGHT AND SCREWS GEAR AVAILABLE
DZ04	04152591 / 0223 / 2854 / 02929337 / 3371552 / 20050591203	F2L 912 / D / W	2 CYL	WITH COUNTER WEIGHT GEAR AVAILABLE
DZ05	04152646 / 02929338 / 210556 / 2136928 / 2931044 / 7513N	F3L 912 / D / W 2.8 L	3 CYL	6240,2250 WITH COUNTER WEIGHT AND SCREWS GEAR AVAILABLE
DZ06	0415 2903 / 0213 8819 / 0292 9340 / 02931301 / 04150169 / 04152650 / 04232745 / 02931044 / 20050591204	F4L 912 / D / W	4 CYL	WITHOUT CENTER GEAR WITH COUNTER WEIGHT MINIBUS
DZ06A	0415 2903 / 0213 8819 / 0292 9340 / 02931301 / 04150169 / 04152650 / 04232745 / 02931044 / 20050591204	F4L 912 / D / W	4 CYL	WITHOUT CENTER GEAR INTEGRATED COUNTER WEIGHT MINIBUS
DZ07	0415 2646 / 0292 9338 / 20050591214 / 2931048 / 7514N	F4L 912 3.8 L	4 CYL	WITH GEAR BIG MAIN / CONNECTING WITH COUNTER WEIGHT
DZ08	0415 1011 / 0292 9342 / 2136932 / 20050591206 / 04151011	F6L 912 / D / W	6 CYL	ASPIRATED WITH COUNTER WEIGHTS AND SCREWS GEAR AVAILABLE
DZ09	02929345 / 02139405	BF6L 913 / C / T	6 CYL	ASPIRATED TURBO WITH COUNTER WEIGHTS AND SCREWS.
DZ11	4270236	1011F	4 CYL	BF 4M 1011 / 2011 STROKE 112 mm CONNECTING PIN-55mm

DETROIT DIESEL
FORGED

REF. NO.	ORIGINAL PART NO.	MOTOR & ENGINE	CYLINDERS	DESCRIPTION / REMARKS
DD01	471.030.0401 / 471.031.0701	DD13	6 CYL	
DD02	472.031.0301	DD15	6 CYL	
DD03	23515598	S60 / 12.7	6 CYL	
DD03A	23527771	S60 / 12.7	6 CYL	

DOOSAN
FORGED

REF. NO.	ORIGINAL PART NO.	MOTOR & ENGINE	CYLINDERS	DESCRIPTION / REMARKS
DO01	7386493, 70303237	D24	4 CYL	WITH GEAR

EBRO FORDSON
FORGED

REF. NO.	ORIGINAL PART NO.	MOTOR & ENGINE	CYLINDERS	DESCRIPTION / REMARKS
EF01	EIADDN-6303-F / 81710532 / 66040	3.010 4D 592 E	4 CYL	MAJOR & SUPER MAJOR POWER MAJOR, MAJOR PETROL FORDSON SERIES D FORD THAMES MODEL 220

EICHER CANTER
FORGED

REF. NO.	ORIGINAL PART NO.	MOTOR & ENGINE	CYLINDERS	DESCRIPTION / REMARKS
CA01			4 CYL	EICHER CANTER
CA02			6 CYL	EICHER CANTER
CA03			6 CYL	EICHER JUMBO 2016

ERKUNT
FORGED

REF. NO.	ORIGINAL PART NO.	MOTOR & ENGINE	CYLINDERS	DESCRIPTION / REMARKS
ER01	201-47542		3 CYL	Erkunt / Perkins 1103
ER02	4181V017 / ZZ90236		3 CYL	Erkunt / Perkins 1103 / 1003B - 33 / 103C - 33T Lip Seal (Gear End : 3 Holes, Keyed, Flange : 6 Holes, 1 Dowel)
ER03	ZZ90237		4 CYL	Erkunt / Perkins 1104 / 1004
ER04	ZZ90222, ZZ90239		4 CYL	Erkunt / Perkins 1004 / 1104 Lip Seal (Gear End: 3 Holes, Splined, Keyed, Flange: 10 Holes, 1 Dowel)

FIAT IVECO TRACTOR

FORGED

REF. NO.	ORIGINAL PART NO.	MOTOR & ENGINE	CYLINDERS	DESCRIPTION / REMARKS
FT02	4785106		3 CYL	480, 480S, 540 / 8035 - 01 / 02 / 04 MAIN 76.2 MM CON 58.75 MM STROKE 110 MM FLANGE 110 MM / FLANGE HOLE -07 (Gear Available)
FT04	4785111 / 98461246 / 5088486 / 99464932		3 CYL	45 - 66 (66 Series) / 45 - 76 (76 Series) 50 - 66 (66 Series) / 55 - 46 (46 Series) 55 - 56 (56 Series) / 55 - 65 (65 Series) 55 - 66 (66 Series) / 55 - 75 (75 Series) 55 - 76 (76 Series) / 55 - 85 (85 Series) 55 - 86 (86 Series) / 55 - 88 (88 Series) 55 - 90 (90 Series) / 56 - 66 (66 Series) 60 - 46 (46 Series) / 60 - 56 (56 Series) 60 - 65 (65 Series) / 60 - 66 (66 Series) 60 - 75 (75 Series) / 60 - 76 (76 Series) 60 - 85 (85 Series) / 60 - 88 (88 Series) 60 - 90 (90 Series) / 60 - 93 (93 Series) 60 - 94 (94 Series) / 62 - 85 (85 Series) 62 - 86 (86 Series) / L60 (L Series) (Gear Available)
FT05	4602840 1930130 4653850		3 CYL	450 TRACTOR, MAIN 76.2 MM, CON - 58.75 MM STROKE - 110 MM, FLANGE 95 MM FLANGE HOLE - 06 SHORT, WEB GROVE ON 4TH MAIN (SUITABLE FOR MIDDLE EAST MARKET) (Gear Available)
FT07	4653287	8040.02	4 CYL	FIAT 50 NC LORRY 6 Holes - Flange 95 mm CLASSIC TRACTORS-550 / 600 / 640 / 666 / 670 / 680 (Gear Available)
FT08	98451527 / 098449226 / 504075031	8040.05 8040.25	4 CYL	50.9 - 65.12 ZETA / 65E10 - 75E12, 50NC 85.12 / 65.9 / 35.9, Suitable for tractor MAIN - 79.8 MM CON - 63.75 MM STROKE - 115 M, FLANGE 114 MM FLANGE HOLE - 07 (Gear Available)
FT09	4785110 / 4785304 / 98451529 / 5088487		4 CYL	65 - 66 (66 Series) / 65 - 90 (90 Series) 65 - 93 (93 Series) / 65 - 94 (94 Series) 70 - 66 (66 Series) / 70 - 66 F (66 Series) 70 - 76 F (76 Series) / 70 - 90 (90 Series) 72 - 93 (93 Series) / 72 - 94 (94 Series) 80 - 66 (66 Series) / 80 - 66 F (66 Series) 80 - 76 (76 Series) / 80 - 76 F (76 Series) 80 - 90 (90 Series) / 82 - 93 (93 Series) 82 - 94 (85-90 (90 Series) / 88 - 93 (93 Series) 88 - 94 (94 Series) / L65 (L Series) L75 (L Series) / L85 (L Series) / L95 (L Series) (Gear Available)
FT11	4785107	8060 / 8065.25	6 CYL	95.14.1 -109.14.1 -110.14 - EUROCARGO 116136 CV - FIAT 150NT

FORD				FORGED
REF. NO.	ORIGINAL PART NO.	MOTOR & ENGINE	CYLINDERS	DESCRIPTION / REMARKS
FO01	C5NE-6303-R ECNN-63038-A C5NE6303L C5NE6305 EONN6303AA 1590N 247-5215	D175 / D183 / D192 / BSD329	3 CYL	FORD 3000 SERIES STROKE 4.2" 2000, 2100, 2110, 2120, 2300, 230A, 2310, 234, 2610, 2910, 3000, 3000 Super Dextra, 3055, 3100, 3110, 3120, 3150, 3190, 3230, 3300, 3310, 333, 3330, 335, 336, 340, 340A, 3400, 3500, 3550, 3600, 3610, 3900, 3910, Gas 4000 Series
FO02	FONN-6300-MA / C5NE-6303N / C5TE6303 / E5NN6306N / E5NN6303AA, FONN6303BA, 83956951, 1591N	BSD 333 3.3L	3 CYL	FORD 4000 SERIES 245D, 250C, 260C, 3930, 3930H, 3930N, 4130, 420, 4400, 445, 445C, 445D, 4500, 4630, 515, 530A, 531, 535, 540, 545, 4000, 3930NO, 4000 Major, 4100, 4110, 4130, 4130N, 4130NO, 4140, 4190, 4200, 4330, 4340, 4400, 4410, 4500, 4600, 4600SU, 4610, 4610SU, 4630, 260C, 455, 455C, 455D, 515, 530A, 531, 532, 535, 540, 540A, 540B, 545, 545A, 545C, 550, 555, 555A, 555B Skid Loaders : L783, L785
FO03	C5NE-6303-K 1595N / 6110A	233 / 256 / BGD442	4 CYL	FORD 5000 SERIES STROKE 4.2" (AFTER 9/4/1986) GEAR 76 TEETH Super Major 5000, 51 00, 5190, 5200, 5500, 5550, 5600, 6510, 5700, 6000, 650, 655, 6500, 6600, 6610, 6700, Combines : 620, 622, Loaders : A62, 750, Dorsett Wheel Tractors : 7000, 7100, 7200, 7500, 7600, 7610, 7700, 7710
FO05	E5NN6303DA		4 CYL	FORD 6010 SERIES STROKE 4.4" GEAR 78 TEETH / 6610 / 5640
FO06	C5NE-6303-K 1595N, 6110A	233 / 256 / BSD442	4 CYL	FORD 5000 SERIES STROKE 4.2" (BEFORE 9 / 4 / 1986) Major 5000 / 5600 / 6600 / 7000 / 7600 / 7700 Super Major 5000 / 51 00 / 5190 / 5200 / 5500 / 5550 / 5600 / 561 0 / 5 700 / 6000 / 650 / 655 / 6500 / 6600 / 6610 / 6700, Combines : 620, 622 Loaders : A62, 750, Dorsett
FO07	D9NN-6303-AA / E5NN 6303FA / NN 6303CB E5NN6303DA / E5NN6303CA D9NN6303A / D5NN6303A 1598N / D9NN6110AA	D268 / BSD444 / 655	4 CYL	FORD 6000/ 7 61 0 SERIES STROKE 4.4" GEAR 78 TEETH (PRIOR TO 9 / 4 / 1986) 6000 / 6600 / 661 0 / 6700 / 671 0 / 7000 / 7600 / 761 0 / 7700 / 771 0 / 7200 / 7100 / 7500 Loader : A62 Dorsett Diese
FO08			4 CYL	4230 (30 Series) / 4330/ 4430 (30 Series) / 4835 (35 Series) / 5010 S (1 0 Series) / 5635 (35 Series) / 6635 (35 Series) / 7635 (35 Series) / L65 (L Series) / L75 (L Series) / L85 (L Series) / L95 (L Series) / TD75 D (TD Series) / TD80 (TD Series) / TD80 D (TD Series) / TD85 D (TD Series) / TD90 (TD Series) / TL 100 (TL Series) / TL70 (TL Series) / TL80 (TL Series) / TL 90 (TL Series) / TN65 F (TN Series) / TN70 F (TN Series) / TN75 F (TN Series) / TN75 FA (TN Series)/ TN80 (TN Series) / TN85 FA (TN Series) / TN95 F (TN Series)/ TN90F
FO09			3 CYL	3010S3435 (35 Series) / 3830 (30 Series) 3935 (35 Series) / 401 0S4030 (30 Series) / 4135 (35 Series) / 4635 (35 Series) / 501 0STD55DTD60 (TD Series) / TD60DTD65DTL65 (TL Series) / TN55 (TN Series) / TN55DTN60ATN65 (TN Series) / TN70 (TN Series) / TN75 (TN Series)

FORD				FORGED
REF. NO.	ORIGINAL PART NO.	MOTOR & ENGINE	CYLINDERS	DESCRIPTION / REMARKS
FO11	957E6303 E2006TP		3 CYL	Dexta, Super Dexta Ford New Holland
FO12			4 CYL	F 250 / F 350

HATZ				FORGED
REF. NO.	ORIGINAL PART NO.	MOTOR & ENGINE	CYLINDERS	DESCRIPTION / REMARKS
HAT01	333901.119		1 CYL	E 89 (PANCAR MOTOR)
HAT02	425900.349		2 CYL	Z 108 (PANCAR MOTOR)
HAT03	13000202249		1 CYL	E 75 (PANCAR MOTOR)
HAT04	10461902272		2 CYL	E 780 (PANCAR MOTOR)
HAT05	00010R0080 / 01008		2 CYL	E 780 / RUGGERINI RY120 - E 78

HINDUSTAN				FORGED
REF. NO.	ORIGINAL PART NO.	MOTOR & ENGINE	CYLINDERS	DESCRIPTION / REMARKS
HS50			4 CYL	HINDUSTAN SUPER 50

HINDUSTAN SUPER				FORGED
REF. NO.	ORIGINAL PART NO.	MOTOR & ENGINE	CYLINDERS	DESCRIPTION / REMARKS
HS50			4 CYL	HINDUSTAN SUPER 50

HINO				FORGED
REF. NO.	ORIGINAL PART NO.	MOTOR & ENGINE	CYLINDERS	DESCRIPTION / REMARKS
HN01	13411-1592		4 CYL	HIN04D / HINOW04D
HN02	X3310211		6 CYL	HIN06D Also suitable for Ashok Leyland 6D engine Hino H07C
HN03	F3349611		6 CYL	HIN06E Also suitable for Ashok Leyland 6E engine

HYUNDAI				FORGED
REF. NO.	ORIGINAL PART NO.	MOTOR & ENGINE	CYLINDERS	DESCRIPTION / REMARKS
HU01	2311142002 / 2311142901		4 CYL	D4BB H-100 Minibus GALLOPER / H / HR 100
HU02	2310041700		4 CYL	D4AA / D4FB / D4DA HD72 / HD77 H-350 TRUCK New Mighty

HYUNDAI
FORGED

REF. NO.	ORIGINAL PART NO.	MOTOR & ENGINE	CYLINDERS	DESCRIPTION / REMARKS
HU03	2310041001		4 CYL	D4DE / D4AF Old Mighty

IFA
FORGED

REF. NO.	ORIGINAL PART NO.	MOTOR & ENGINE	CYLINDERS	DESCRIPTION / REMARKS
IFA01	0692-01 2795971006	W - 50	4 CYL	BOLTED COUNTER WEIGHT FORT SCHRITT 300-303

ISUZU
FORGED

REF. NO.	ORIGINAL PART NO.	MOTOR & ENGINE	CYLINDERS	DESCRIPTION / REMARKS
ISU01	8971129812 / 8971465202 / 8971129813		4 CYL	4HF1 / 4HG1 NPR66 CHAMPION
ISU02	8980292701 / 8973515343		4 CYL	4HE1 NPR
ISU03	8980292700 / 8973525342		4 CYL	4HE1 / 4HK1T / 4HK1 NQR 70 / 6T TRUCK NPR 70 / 8T TRUCK
ISU04	8973318530		4 CYL	4JB1T 5.2T TRUCK NKR 55E
ISU05	8944436620 / 8944552401 / 8970236620		4 CYL	4JA1 / 4JB1 NKR

JAGUAR
FORGED

REF. NO.	ORIGINAL PART NO.	MOTOR & ENGINE	CYLINDERS	DESCRIPTION / REMARKS
JG01	AJV6D	3.0L	6 CYL	JAGUAR XF CRANKSHAFT

JCB
FORGED

REF. NO.	ORIGINAL PART NO.	MOTOR & ENGINE	CYLINDERS	DESCRIPTION / REMARKS
JCB01	02101825		4 CYL	Loader 410, 520, 525-58, 525-67, 530-110, 530-120, 530-95 Loading Shovel 412, 415 Sitemaster 3C / Sitemaster 3CX / Sitemaster 3D Sitemaster 3D / Sitemaster 4C, 4CN Telescopic Handler 520, 525, 530, 140, 1400 B, 1550 B, 214, 409 TM, 502-22, 506-36, 520 HL, 520 M, 525 B, 525 B-HL, 530 B, 540 B, 540 BM, 811, 909 Turbo, 910, TM200

JOHN DEERE

FORGED

REF. NO.	ORIGINAL PART NO.	MOTOR & ENGINE	CYLINDERS	DESCRIPTION / REMARKS
JD01	AT8031 / T-23516 / RE47637 RE46896 / T20031 / 247-5144 / 6833N / T2351C / T23516T / T23517T	3-152, 152 C.I.D. 2.5 L 3-764, 164 C.I.D. 2.7 L 3 -179, 179 C.I.D. 2.9 L	3 CYL	940, 1020, 1030, 1040, 1120, 1130 1140, 1520, 1530, 1630, 2020, 2040, 2150, 2155, 2240, 2255, 2355NCS, 2355NTSS, 300, 300A, 300BT, 301, 3018, 302A, 3029, 3029D, 310, 350 (Gear Available)
JD01A	247-5225, 6897N RE50979, RE521348, R101223	3 -179 / 3029 Power Tech 179 C.I.D., 2.9 L	3 CYL	2155, 2355N, 2240, 5105, 5205, 5200, 5300, 5400, 5210, 5310,5310N, 5410, 5510,5510N, 5220, 5320, 5320N, 5400N, 5500N, 420, 5420N, 5520, 5520N Tractors, 240, 250, 260, 270, 8875 Skid Steer Loaders, 300 Series (Gear Available)
JD02	AT18030 / T-23517 / R23517 / R81959 / R94644 / RE48748 / 23909 / 247-5154 / 6826N / 97926 / 97928/ R979266 / T23266 / T23480T / T23517T / T28743T	4-202, 202 C.I.D., 3.3 L 4-219, 219 C.I.D., 3.6 L 4-239 (Early) Below SN 769,619 239 C.I.D., 3.9 L	4 CYL	SHORT NOSE 36 MM 1640, 1830, 1840, 2020, 2030, 2040, 2040S, 2120, 2130, 2100, 2250, 2270, 2280, 2320, 2355C2, 2355TSS, 2360, 2420, 2450, 244E, 2510, 2520,2523, 2555C2, 2650, 2730, 2735, 2750, 2755CS, 2755TSS, 2850, 2855N, 290D,370, 310B, 310C, 310D, 315C, 3300, 34, 3430, 3830, 401, 401A, 401B, 401C, 401D, 4020, 4030T, 4039D, 4039T, 400, 410, 410B, 515B, 44, 440, 440A ,440B, 450, 450A, 450B, 450C, 450D, 454, 455D, 480, 480A, 480B, 480C, 482C, 490, 499, 515B, 6040, 6200, 6300,6602, 6620, 6622, 70, 70D (Gear Available)
JD03	RE20585, RE36605, RE23909, R97926, R97928, R121018, R81959, R979266, RE65224	4-219 / 4-039 / 4-239 (Late) Above SN 769,620 239 C.I.D., 3.9 L	4 CYL	LONG NOSE 60 MM, 2755, 6040, 4039, 190 Excavator, 300 D, 310 C, 315 C Loader / Backhoe (Gear Available)
JD04	AT22562 / T-23266, RE502190, RE45541, RE47640, Re48330, R108568, R108679, R45541, 247-5058, 6837N, F1910R, F2729R, F2792R, F3315R, F3560R, F3561R, R26550, R26550R, R40730, RE45541, RE54130, T2, 264T, T23266T, T23299T, T23480T, T23517T, RE502190	6 -303 5L 6 -329 5.4L 6 -359 5.9L 6059D / T / A 5.9L	6 CYL	3030 / 3040 / 3120 / 3130 / 3640 / 4040S / 2840, 2940, 2950, 2955, 3130, 3140, 3150, 3155TSS, 4030, 4200, 4400, 4420, 4425, 444, 444C, 444CH, 444D, 499, 540, 540A, 540E, 540G, 544, 544A, 544C, 544D, 544E, 544G, 548E, 570, 570A, 570B, 710B, 710C, 710D, 6059D, 5049T, 699, 7484, 9900, 9910, 9920, 9930 (Gear Available)
JD05	RE54883 / RE33485 (OLD) / R90825D / R120009 / 247-5156 / 6852N / R121018 / RE55452	4-276 / 4-276T / 4-045 I 4-045T / 4045D, 276 C.I.D. 4.5L	4 CYL	LONG NOSE 60MM, 410D, 440G, 51 0D Loader 490E Excavator, 540E Skidder, 548E Grapple / Skidder (Gear Available)
JD06	RE56792, RE71439, R54501, 247-5158, 6812N, R108657, R54501R	4.276 / 4.276T	4 CYL	340D, 440C, 448D, 540B, 540D, 548D Skidder, 344E, 410C, 444E, 510B, 510C, 610, 610B, 610C, 650G Loaders 450E, 450G, 455E, 455G, 550, 550A, 550B, 550G, 555, 555A, 555B, 55G Crawlers, 490D, 493D, 495D, 590D, 595, 595D Excavator, 2630, 2640, 6215, 6415 (Gear Available)

JOHN DEERE

FORGED

REF. NO.	ORIGINAL PART NO.	MOTOR & ENGINE	CYLINDERS	DESCRIPTION / REMARKS
JD07	RE45517, RE33687 (OLD), RE4619, RE63024, RE502191, R54619, 247-5132, 6820N, R104523	6.414D. / 6.414T 6.8 L / 6068 6068D / 6068 T / 6.8L	6 CYL	414, 414D, 544B, 544C, 544D, 624E, 624G, 640, 640D, 640E, 643, 643D, 648D, 648E, 648G, 653, 655B, 670, 670A, 670B, 672A, 672B, 690D, 690E, 693D, 750, 750B, 750C, 755, 755A, 755B, 790E (Gear Available)
JD08	RE50618, RE504638, R113596, 247-5213, 6858N	4045, 4.5 L Powertech	4 CYL	SINGLE STEP TC444H, 120, 210LE, 310E, 310G, 310SE, 310SG, 315SE, 315SG, 410E, 410G, 444H, 450G, 450H, 455G, 485E, 486E, 488E, 550G, 550H, 555G, 6410, 6410L, 650G, 650H, 5403, 5410, 5415, 5415H, 5420, 5420N, 5425, 5425N, 5510, 5510N, 5520, 5520N, 5525, 5525N, 5605, 5615, 5705, 5715, 5715HC, 6110, 6110L, 6120, 6120L, 6210, 6210L, 6215, 6220, 6220L, 6310, 6310L, 6310S, 6320, 6320L, 6403, 6405, 6410S, 6415, 6420, 6420L, 6510L, 6510S, 6520L Skid Steers: 260, 270, 280 Sprayers: 6700 (Gear Available)
JD08A	RE50618, RE504638, R113596, 247-5213, 6858N	4045, 4.5 L Powertech	4 CYL	DOUBLE STEP TC444H, 120, 210LE, 310E, 310G, 310SE, 310SG, 315SE, 315SG, 410E, 410G, 444H, 450G, 450H, 455G, 485E, 486E, 488E, 550G, 550H, 555G, 6410, 6410L, 650G, 650H, 5403, 5410, 5415, 5415H, 5420, 5420N, 5425, 5425N, 5510, 5510N, 5520, 5520N, 5525, 5525N, 5605, 5615, 5705, 5715, 5715HC, 6110, 6110L, 6120, 6120L, 6210, 6210L, 6215, 6220, 6220L, 6310, 6310L, 6310S, 6320, 6320L, 6403, 6405, 6410S, 6415, 6420, 6420L, 6510L, 6510S, 6520L Skid Steers: 260, 270, 280 Sprayers: 6700 (Gear Available)
JD09	RE506195 R503715	4045 4.5L PowerTech	4 CYL	Tractors: 310J, 310SJ, 344H (SN800000>), 3800, 410J, 444J (Tier III SN 611 275>), 450J (Tier III SN 15998 7 >), 550J (Tier III SN 159987>), 650J (Tier III SN 159987>) European: SE6010, SE6020, SE6110, SE6120, SE6210, SE6220, SE6310, SE6320, SE6410, SE6420, 5415, 5510, 5510N, 5515, 5605, 5615, 5620, 5705, 5720, 5820, 6010, 6020, 6110, 6110L, 6120, 6120L, 6130, 6205, 6210, 6210L, 6215, 6220, 6220L, 6225, 6230, 6230 PREMIUM, 6310, 6310L, 6310S, 6320, 6320L, 6325, 6330, 6330 PREMIUM, 6405, 6410, 6410L, 6410S, 6415 (Eng SN 196071>), 6420, 6420L, 6420S, 6425, 6430, 6430 PREMIUM, 6510L, 6510S, 6520L Brazil : 5403 (Eng. SN 006876>) (Gear Available)
JD10	AR96189, R26540, R26560, R56919, R56934, RE63451, RE53422, RE26560R, R40570, R40740R	6076 Early, 6404 Late Above SN 215,000, 6.6 L, 6466 Early Below SN 499,000, 7.6 L	6 CYL	4010 Early, 4020, 4040, 4230, 4240, 4320, 4430, 4620, 4630, 7020 SHORT NOSE 3" (Gear Available)

JOHN DEERE

FORGED

REF. NO.	ORIGINAL PART NO.	MOTOR & ENGINE	CYLINDERS	DESCRIPTION / REMARKS
JD11	RE42674, AR26431, R26560, RE63292, 247-5137, 6822N R26549, R26560, R4074R, R53203	6.404 Early SN BELOW 21 4, 999 6.6 L	6 CYL	600 Wheel Loader 4000, 4010, 4020, 4230, 4230, 4430, 4630 Wheel Tractors, 600, 644, 644A, 646, 646B, 690, 690A, 690B, 693B, 740 (Gear Available)
JD12	6857N, R104855, R26560, R26560R, RE42675, RE53203, RE53477, R56506, R56919, R56934, R56979, R63451, R87544A	6466 / 6076 Late	6 CYL	SHORT NOSE 4000, 4010, 4020, 4040, 4230, 4240, 4430, 4440, 4450, 4630, 4640, 4650, 466, 4830, 4840, 4850, 4960, 5460, 5720, 5730, 600, 6076, 644, 644A, 5720, 5730, 600, 6076, 644, 644A, 644C, 644D, 646C, 690, 690A, 690C, 693C, 740, 740A, 743, 743A, 762A, 762B, 7700, 7720, 770A, 770B, 772A, 772B, 790, 790D, 792, 793D, 8430, 8440, 8450, 850B, 8820, 892D, 9950 (Gear Available)
JD13	R104855, RE53201, RE42671, RE63293, 247-5164, 6855N, R26506, R26506R, R56919, R87544, RE27132, RE42675, RE53199, RE53201, RE53291, RE53292, RE63293, RG23551	6076 Late 7.6 L ABOVE SN 187, 658	6 CYL	LONG NOSE 4455, 4555, 4755, 4760, 4955, 4960, 6076, 6076A, 6076D, 6076H, 6076T, 644E, 644EH, 644ER, 644G, 740E, 748E, 748G, 7700, 7800, 8560, 8570, 892E, 9960 (Gear Available)
JD14			4 CYL	Agricultural Tractor-2000 series 2000, 2100, 2200, 2300

KAWASAKI

FORGED

REF. NO.	ORIGINAL PART NO.	MOTOR & ENGINE	CYLINDERS	DESCRIPTION / REMARKS
KA01	EZGO 603531		1 CYL	KAWASAKI engine for EZGO gas 2008-up RXV
KA02	EZGO 72503-G01 CART PARTS CP72503-G01		2 CYL	Crankshaft 350cc for EZGO gas 1996-02
KA03	CART PARTS CP17443-G1		1 CYL	EZGO gas 2Cycle 1980 - 88
KA04	CART PARTS CP1019223-01		1 CYL	Crankshft with clockwise rotation for Club car gas 1997-03 DS and precedent FE290

KIRLOSKAR
FORGED

REF. NO.	ORIGINAL PART NO.	MOTOR & ENGINE	CYLINDERS	DESCRIPTION / REMARKS
KIR01	2H002100		2 CYL	KIRLOSKAR HA2 GEAR AVAILABLE
KIR02	3H002100		3 CYL	KIRLOSKAR HA3 GEAR AVAILABLE
KIR03	4H002100		4 CYL	KIRLOSKAR HA4 GEAR AVAILABLE
KIR04	6H002100		6 CYL	KIRLOSKAR HA6 GEAR AVAILABLE

KOMATSU
FORGED

REF. NO.	ORIGINAL PART NO.	MOTOR & ENGINE	CYLINDERS	DESCRIPTION / REMARKS
KO01	6732-31-1100	4D102	4 CYL	
KO02	6735-01-1310	6D102	6 CYL	
KO03	6745-31-1120	6D114	6 CYL	

KUBOTA
FORGED

REF. NO.	ORIGINAL PART NO.	MOTOR & ENGINE	CYLINDERS	DESCRIPTION / REMARKS
KU01	1532 / 23010		3 CYL	L295 / 295DT TRACTOR
KU02	1G962-23012	D902	3 CYL	

LADA
FORGED

REF. NO.	ORIGINAL PART NO.	MOTOR & ENGINE	CYLINDERS	DESCRIPTION / REMARKS
LA01	BA869699		4 CYL	LADA PETROL FIAT 1100

LAND ROVER
FORGED

REF. NO.	ORIGINAL PART NO.	MOTOR & ENGINE	CYLINDERS	DESCRIPTION / REMARKS
LR01		3.0 TD	6 CYL	LAND ROVER DISCOVERY SDV6
LR02		3.0 L 2.7 L	6 CYL	RANGE ROVER TD V6 / RANGE ROVER SPORT

LEYLAND
FORGED

REF. NO.	ORIGINAL PART NO.	MOTOR & ENGINE	CYLINDERS	DESCRIPTION / REMARKS
LEY01	F3336611 / CCJ0004	400 / 401 / 402 / 411	6 CYL	BRITISH LEYLAND U.K. ASHOK LEYLAND BMC LEYLAND
LEY02			3 CYL	LEYLAND 245, 253
LEY03			3 CYL	LEYLAND MARSHALL 502

LISTER PETTER
FORGED

REF. NO.	ORIGINAL PART NO.	MOTOR & ENGINE	CYLINDERS	DESCRIPTION / REMARKS
LP01	201-47542	TR1	1 CYL	T RANGE
LP02	202-47542	TR2 / TX2	2 CYL	T RANGE
LP03	203-47542	TR3	3 CYL	T RANGE

LOMBARDINI
FORGED

REF. NO.	ORIGINAL PART NO.	MOTOR & ENGINE	CYLINDERS	DESCRIPTION / REMARKS
LOM01	1052595		1 CYL	3LD 510 (Long Type / Flywheel Teeth - Right / Motor Type - Left)
LOM02	1051068		1 CYL	3LD 450 (Short Type / Flywheel Teeth - Right / Motor Type -Left)
LOM08	1053097		1 CYL	3LD 450 (Short Type / Flywheel Teeth - Right / Motor Type - Left)
LOM09	1051082		1 CYL	3LD 510 (Short Type / Flywheel Teeth - Left/ Motor Type - Right)
LOM10	1051083		1 CYL	3LD 510 (Short Type / Flywheel Teeth - Right/ Motor Type - Left)
LOM11	1050055		1 CYL	3LD 450 (Long Type / Flywheel Teeth - Left / Motor Type - Right)

LONG TRACTOR

FORGED

REF. NO.	ORIGINAL PART NO.	MOTOR & ENGINE	CYLINDERS	DESCRIPTION / REMARKS
LG01	TX10170 TX15106		3 CYL	2360, 2360DTC, 2460, 2460DTC, 2460SD, 2460SDDTC, 2510, 2510DTC, 2510SD, 2510SD- DTC, 350, 360, 360C, 445, 445DT, 445SD, 445V, 460, 460DT, 460SD, 460V, 510, 510DT

MWM

FORGED

REF. NO.	ORIGINAL PART NO.	MOTOR & ENGINE	CYLINDERS	DESCRIPTION / REMARKS
MW01	9.226.8.140.001.6, 9.226.8.140.001.8	D225 / 226 / 229	4 CYL	Stroke 120.0 mm No center gear / balancer
MW02	6.228.0.140.014.5 6.228.8.140.014.8	TD229 Turbo	4 CYL	MaxxFace Engine 4.0 Stroke 120.0 mm / No gear

MACK

FORGED

REF. NO.	ORIGINAL PART NO.	MOTOR & ENGINE	CYLINDERS	DESCRIPTION / REMARKS
MA01	456GC2125 456GC5113 456GCF586	E - 6	6 CYL	

MAHINDRA AND MAHINDRA / INTERNATIONAL HARVESTER

FORGED

REF. NO.	ORIGINAL PART NO.	MOTOR & ENGINE	CYLINDERS	DESCRIPTION / REMARKS
MM - IH -101	55570540R11	275 D1 / T4 SERIES	3 CYL	
MM - IH -102	5557055	265 DI	3 CYL	REGULAR BS
MM - IH -103	5553039	475 DI	4 CYL	REGULAR BS 780, 880, 885, 4600 Tractors

MAHINDRA AND MAHINDRA

FORGED

REF. NO.	ORIGINAL PART NO.	MOTOR & ENGINE	CYLINDERS	DESCRIPTION / REMARKS
MM104		XD 3P 2.5L	4 CYL	MAHINDRA BOLERO
MM105		MDI 3200 2.6L	4 CYL	MAHINDRA BOLERO

MAZDA

FORGED

REF. NO.	ORIGINAL PART NO.	MOTOR & ENGINE	CYLINDERS	DESCRIPTION / REMARKS
MZ01	SL01 11 301 C		4 CYL	PICKUP VAN / SWARAJ MAZDA
MZ02	SL50 11301 A / B		4 CYL	SL, T3500

MERCEDES – BENZ

FORGED

REF. NO.	ORIGINAL PART NO.	MOTOR & ENGINE	CYLINDERS	DESCRIPTION / REMARKS
OM02	314.030.62.02 / 314.030.60.02 314.030.55.02 / 314.030.33.02 314.030.49.02 / 314.030.44.02	OM314	4 CYL	Trucks L 608 / L 708 Chassis w / bus LO 603/ 608 LO / LO 708 4 INTEGRATED COUNTER WEIGHTS KNURLED 97 MM
OM03	314.030.6102 / 314.030.5202 314.030.3202 / 314.030.2002 314.030.5501 / 314.030.5002 314.030.5205	OM314	4 CYL	Trucks L 608 / L 708 Chassis w / bus LO 603/ 608 LO / LO 708 4 INTEGRATED COUNTER WEIGHTS SCROLLED 97 MM
OM06	352.030.3202 / 352.030.7402 352.030.3402 / 352.030.6802 352.030.0002	OM352	6 CYL	911 B - SCROLLED (INTEGRATED COUNTER WEIGHTS) Trucks 1113 / 1114 / 1115 / 1118 / 1313 / 1314 / 1315 / 1316 / 1317 / 1318 / 1513 / 1514 / 1518 / 2013 / 2014 / 2016 / 2017 / 2213 / 2214 / 2216 / 2217 / 2218 / 2314 Chassis w / bus LO LPO - 1113 / 1114 / 1116 / OF IT 1115 / LO - OF - OM 1313 / 314 / OF - OH 1313 / 1314 / OF - OH 1315 / 1318 / 1518 / LO - OH 1317 97MM
OM06A	352.030.3402 352.030.1502 352.030.5802 352.030.6802 352.030.0002	OM 352 / 353	6 CYL	SCROLLED COUNTER WEIGHT FASTENED WITH BOLTS. Trucks 1113 / 1114 / 1115 / 1118 / 1313 / 1314 / 1315 / 1316 / 1317 / 1318 / 1513 / 1514 / 1518 / 2013 / 2014 / 2016 / 2017 / 2213 / 2214 / 2216 / 2217 / 2218 / 2314 Chassis w / bus LO LPO - 1113 / 1114 / 1116 / OF IT 1115 / LO - OF - OM 1313 / 1314 / OF - OH 1313 / 1314 / OF-OH 1315 / 1318 / 1518 / LO - OH 1317 97MM
OM07	352.030.6402 / 352.030.3702 352.030.5802 / 52.030.7002 352.030.4602 / 344.030.4901 344.030.6701 / 344.031.9301 352.030.0902 / 352.030.7002 352.030.7802 / 352.030.8002	OM352	6 CYL	911 C - KNURLED (INTEGRATED COUNTER WEIGHTS) Trucks 1113 / 1114 / 1115 / 1118 / 1313 / 1314 / 1315 / 1316 / 1317 / 1318 / 1513 / 1514 / 1518 / 2013 / 2014 / 2016 / 2017 / 2213 / 2214 / 2216 / 2217 / 2218 / 2314 Chassis w / bus LO LPO - 1113 / 1114 / 1116 / OF IT 1115 / LO - OF - OM 1313 / 1314 / OF - OH 1315 / 1318 / 1518 / LO - OH 1317 97MM
OM07A	352.030.3702 / 352.030.4602 352.030.5802 / 352.303.7002 352.030.6402 / 352.030.7802 344.030.4901 / 344.030.6701 344.031.9301 / 352.030.0902 352.030.8002	OM 352 / 353	6 CYL	KNURLED COUNTER WEIGHT FASTENED WITH BOLTS Trucks 1113 / 1114 / 1115 / 1118 / 1313 / 1314 / 1315 / 1316 / 1317 / 1318 / 1513 / 1514 / 1518 / 2013 / 2014 / 2016 / 2017 / 2213 / 2214 / 2216 / 2217 / 2218 / 2314 Chassis w / bus LO LPO - 1113 / 1114 / 1116 / OF IT 1115 / LO - OF - OM 1313 / 1314 / OF - OH 1315 / 1318 / 1518 / LO - OH 1317 97MM

MERCEDES – BENZ
FORGED

REF. NO.	ORIGINAL PART NO.	MOTOR & ENGINE	CYLINDERS	DESCRIPTION / REMARKS
OM08A	364.030.1102 / 364.030.0702 364.030.1302 / 364.030.1402 364.030.1201 / 374.030.0002	OM 364 / A / LA	4 CYL	INTEGRATED COUNTER WEIGHTS Aspirated / Turbo intercooler Buses 610 U / L 709 / L 710 / L 712L 912 / L 915 Chassis w / bus LO 712 / 812 - OF 809 / 812 - LB 814 / LN 914 / 914 ON / OF 1114 / OF 1214 97.5MM
OM09	366.031.1201 / 366.030.0702 366.030.1102 / 366.030.1402 366.030.1502 / 366.030.1602	OM 366 / A / LA / G	6 CYL	8 INTER GRATED COUNTER WEIGHTS Trucks 1214 / 1218 / 1318 / 1418 / 1420 / 1614 / 1615 / 1618 / 1620 / 1621 / 1622 / 1714 / 1718 / 1720 / 1721 / 1723 / 2314 / 2318 / 2418 / 2420 Chassis w / bus OF 113 / 1115 / 1215 / 1315 / 1316 / 1318 / 1320 / 1721 / OH 1315 / 1316 / 1318 / 1320 / 1721 / OH 1315 / 1316 / 1319 / 1419 / 1420 / 1521 / 1620 / 0371 / UL - ULP 1214 / 1418 / 1718 / 1721 / 2414 / 2418 97.5MM
OM09A	366.030.1102 366.030.0702 366.030.1402 366.030.1502 366.030.1602	OM 366 / A / LA / G	6 CYL	8 COUNTER WEIGHTS FASTENED WITH BOLTS Trucks 1214 / 1218 / 1318 / 1418 / 1420 / 1614 / 1615 / 1618 / 1620 / 1621 / 1622 / 1714 / 1718 / 1720 / 1721 / 1723 / 2314 / 2318 / 2418 / 2420 Chassis w / bus OF 113 / 1115 / 1215 / 1315 / 1316 / 1318 / 1320 / 1721 / OH 1315 / 1316 / 1318 / 1320 / 1721 / OH 1315 / 1316 / 1319 / 1419 / 1420 / 1521 / 1620 / 0371 / UL-UPL 1214 / 1418 / 1718 / 1721 / 2414 / 2418 97.5MM
OM11	355 030 6701	OM 355	6 CYL	NORMAL ASPIRATED 8 BOLT HOLES - 1 DOWEL
OM12	355 030 6801 345 030 1202	OM 355T	6 CYL	NORMAL ASPIRATED 12 BOLT HOLES - 1 DOWEL
OM13	345 030 0702	OM 355/6	6 CYL	NORMAL ASPIRATED
OM14	442 030 0801 / 442 030 0301 442 030 0901 / 442 030 0401	OM 442 A / LA	8 CYL	V8 (MOTOR N° 470879>)
OM15	422 030 4401 / 422 0303 701 422 030 4301	OM 442 A / LA	8 CYL	V8 (MOTOR N°>470878)
OM18	651 030 1201 / 651 030 0401	OM 651	4 CYL	8 COUNTERWEIGHTS STROKE 99.00 MM EURO - 3
OM18A	651 030 2501	OM 651	4 CYL	4 COUNTERWEIGHTS STROKE 99.00 MM EURO - 5
OM24	457 030 0201 / 457 031 0001 496 030 0001 / 466 030 0501	OM 457 LA / H LA / OM 458	6 CYL	8 INTEGRATED COUNTERWEIGHTS MOD. AXOR I Engines OM 447 and OM 457 Trucks ATRON 1635 / AXOR 1933 / 2036 / 2041 / 2533 / 2536 / 2541 / 2544 / 2641 / 2644 / 2831 / 3341 / 3344 / 4141 / 4144 Older trucks: L 2635 / LS 1634 / 1935 / 1938/ 1941 / 1944 / 1945 / 2638 Chassis w / bus: 500 -MA - AU - UDA / MDA - RS - RSD / OH / OL 1635 / 0371 / 0400 - MTU / STEMAC: Generators I Stroke 155mm
OM25	457 030 0401	OM 457	6 CYL	94 mm CRANKPIN
OM28	904 030 0701 / 904 030 0801 904 030 1101	OM 904	4 CYL	Stroke 130.0 mm / Rear Tip Diameter, Gear / Flywheel Mount, 103.0 mm

MERCEDES – BENZ
FORGED

REF. NO.	ORIGINAL PART NO.	MOTOR & ENGINE	CYLINDERS	DESCRIPTION / REMARKS
OM29	904 030 0301 / 904 030 0702	OM 904	4 CYL	Stroke 130.0 mm 1 Rear Tip Diameter, Gear / Flywheel Mount, 98.0 mm
OM30	924 030 0101 924 030 0601	OM 924	4 CYL	Stroke 136.0 mm 1 Rear Tip Diameter, Gear / Flywheel Mount, 103.0 mm
OM31	906 030 0402 / 906 030 0701 906 030 0501 / 906 030 0502 906 030 0602 / 906 030 0402 906 030 1102 / 906 030 0801 906 030 1302 / 906 030 0401	OM 906	6 CYL	Stroke 130.0 mm 1 Rear Tip Diameter, Gear / Flywheel Mount, 103.0 mm
OM32	906 030 0301 / 906 030 0701 906 030 0702 / 906 030 0801 906 030 0902	OM 906	6 CYL	Stroke 130.0 mm 1 Rear Tip Diameter, Gear / Flywheel Mount, 98.0 mm
OM33	926 030 0201 / 926 030 0701	OM 926	6 CYL	Stroke 136.0 mm 1 Rear Tip Diameter, Gear / Flywheel Mount, 103.0 mm
OM34	541 030 2101	OM 501	6 CYL	Stroke 150.0 mm 6 - cylinder "V" engine
OM35	471.030.0401 / 471.031.0701	OM 471	6 CYL	
OM36	472.031.0301	OM 472	6 CYL	

MITSUBISHI
FORGED

REF. NO.	ORIGINAL PART NO.	MOTOR & ENGINE	CYLINDERS	DESCRIPTION / REMARKS
MIT01			4 CYL	MITSUBISHI COLT T-120M-111 JAPAN
MIT02	ME013667	3.3 L	4 CYL	MITSUBISHI 4D31 / 4D32 CANTER FE 444, FE 304, FB 211 FE Turbo Diesel Truck
MIT03	MD102601	2.5 L	4 CYL	4D55 L - 00 OLD MODEL PAJERO / L200 / L400
MIT04	MD374408 / MD374409		4 CYL	4D56 L - 300 2.5 NEW MODEL
MIT05	ME018297		4 CYL	4D34A / 4D33 CANTER FE 659
MIT06	ME01734		4 CYL	4D34T / 4D35T CANTER TURBO FE 659 T
MIT07	ME013668		4 CYL	4D34 CANTER HD FE 449, FE 635, FE 639
MIT08	1100A028 / 1100A135	2.5 L	4 CYL	4D56U L200

PERKINS
FORGED

REF. NO.	ORIGINAL PART NO.	MOTOR & ENGINE	CYLINDERS	DESCRIPTION / REMARKS
MF01	026005M1 / 736532M91 / 31312419 / 84402 / 31312436 / 31312441 / SD260034 / U5BG0031 / 31312700 / ZZ90084 / 3637454M91 / ZZ90116 / ZZ90148	3.152 / D3.152	3 CYL	KEYED NOSE ROPE SEAL 135 PERKINS (3.152) F : 35, 135, 148, 254, 230, 240, 250, 254, 255, 350, 353, 355, 360, 363, 550 PERKINS : A3, 152, AD 152
MF01A	84399 31312437	3.152	3 CYL	SPLINED NOSE ROPE SEAL
MF01 PL	ZZ90148 / ZZ90116 / 3638309M91 / 84402	3.152 / D3. 152	3 CYL	PERKINS 3.152 ROPE SEAL WITH COUNTER WEIGHT, GEAR, WASHERS & SCREW.
MF02	026053M / 94458 / 31312701 / 94464 / 31312707 / U5BG0027/ 31315135 / ZZ90078 / 3637410M91 / ZZ90150 / ZZ90122 / 637399M91	3.152	3 CYL	KEYED NOSE LIP SEAL
MF02A	31312702 / 31312704 / 94463 / 94459 / ZZ90117	3.152	3 CYL	SPLINED NOSE LIP SEAL
MF02PL	ZZ90148 / ZZ90116 / 3638309M91 / 84402	3.152	3 CYL	KEYED NOSE LIP SEAL WITH COUNTER WEIGHT GEAR, WASHERS & SCREW.
MF03	026008M1 / 3638473M91 / 31315135 / 742742M91 / 31315138 / 84407/31315145 / 85811 / 31315148/92484 / 31315167 / 92485 / 31315184 / U5BG0017 / ZZ90121 / U5BG0028 / 3637399M91 / ZZ900201 / 84440 / 31315174 / 367752M91 / 737309M91 / 74274M91	4.203 / D4.203 A4.192	4 CYL	KEYED NOSE ROPE SEAL MF 65, 158, 165, 765, 155, 650 PERKINS A4.203, AD4.203 Landini, Agricultural tractor prima series 6000 DT, 6000R, 6000 Special, 7000 R. Crawler Tractor C6000 - Cingolati Series MF TRACTOR 7 00 Series 155, 158, 165, 200 Series - 260 Pre 100 series (1947 - 65) Industrial Tractor - 50
MF03A		4.203 / D4.203	4 CYL	SPLINED NOSE / ROPE SEAL
MF04	026032M1 / 94441 / 31315182 / 94454 / 31315784 / 94455 / 742344M91 / ZZ90111 / 026033 / 3637458M91 / 31315661	4.203 / D4.203 / A4.203	4 CYL	KEYED NOSE LIP SEAL MF-65, 158, 165, 765, 155 (100 Series) MF INDUSTRIAL 50 MF LANDINI R - DT6000 Pre 100 Series (1947-65) - 65, 765 Industrial tractor - 50
MF04A	026032M1 / 94441 / 31315182 / 94454 / 31315184 / 94455 / 31315184 / ZZ90111 / 742344M91	4.203 / D4.203 / A4.203	4 CYL	SPLINED NOSE / LIP SEAL
MF05	31315911 / 31315912 / 85721 / 736829M91 / ZZ90108 / 3637789M91 / ZZ90093 / 84422	4.248 / 4.236 / 1004 / 1004.4 / 1004T / 1004.4T	4 CYL	SPLINED NOSE ROPE SEAL (LIGHT WEIGHT) MF 168, 175, 265, 274, 274S, 274SK, 275, 285, 284 - 4S, 365, 373, 375, 377, 383, 387, 565, 575, 675, 3050 MF LANDINI R - DT7500, R - DT6550, C6830, R - DT7550, R - DT7530F PERKINS 4.236, MF COMBINES 440, MF INDUSTRIAL 50, 50B, 50E / EX, 50H / HX 'S' SERIES (Gear Available)
MF05A	3637789M91 / U5BG0054 / 31315911 / 31315912 / 84422 / 85721 / ZZ90093 / 84421 / 94434 / 7340893M1 / 31315851 / 68050 / 736829M91 / 3639541M1 / 85821 / 31315993 U5BG0053 / ZZ90108	4.236 / 4.248	4 CYL	SPLINED NOSE ROPE SEAL (HEAVY WEIGHT) MF 178, 185, 188, 194 - F, 285, 294S - 4S, 393, 397 MF INDUSTRIAL 50E / EX, 60H, 60H "S" SERIES MF LANDINI R - DT8500, C7800, C7830 PERKINS A4.248, 4.248 (Gear Available)

PERKINS
FORGED

REF. NO.	ORIGINAL PART NO.	MOTOR & ENGINE	CYLINDERS	DESCRIPTION / REMARKS
MF06	3637401M91 / U5BG0024 / 31315987 / 31315982 / 31315991 / 94435 / 94436 / ZZ90082 / ZZ90081 / ZZ90143 741747ML	4.236 / 4.248	4 CYL	SPLINED NOSE LIP SEAL (HEAVY WEIGHT) MF 265, 274, 274S, 274SK, 275, 285, 284S - 4S, 365373, 375, 377, 383, 387, 565, 575, 675, 3050, 194 - F, 285, 294 - S - 4S, 393, 397178, 185, 188 MF LANDINI R - DT6550, C6830, R - DT7550, R - DT7530F, MF LANDINI R - DT8500, PERKINS A4.236, PERKINS A4.248, 4.248, MF COMBINES - 440, MF INDUSTRIAL 50, 50B, 50E/EX, 50H/HX, 50H/HX 'S' SERIES. MF INDUSTRIAL 50E/EX, 60H, 60H 'S' SERIES (Gear Available)
MF06A	ZZ90202 / ZZ90081 / 364040M91 / 3665768M2	4.236 / 4.248	4 CYL	(HEAVY WEIGHT) SPLINED NOSE LIP SEAL FLANGE: 12 HOLES (Gear Available)
MF07A	U5BG0026 / 31315664	4.236 / 4.248	4 CYL	SPLINED NOSE ROPE SEAL, (LIGHT WEIGHT) 3 HOLES FOR PULLEY FITTING ON NOSE (Gear Available)
MF08	31315631 / 94433 / 31315641 / 94434 / 31315664 / 85821 / U5BG0052 / 26046 / 31315871 / 31315881 / ZZ90122 / 736829M91 / 31315881 / 741750ML / ZZ90082	4.236 / 4.248	4 CYL	SPLINED NOSE LIP SEAL (LIGHT WEIGHT) MF 158, 175, MF LANDINI R-DT7500 (Gear Available)
MF08A	U5BG0026 / 31315664	4.248 / 4.236 100.4 / Phaser 1004	4 CYL	SPLINED NOSE LIP SEAL (LIGHT WEIGHT) 3 HOLES FOR PULLEY FITTING (Gear Available)
MF08T	ZZ90119 / ZZ90202	1004 Phaser Series	4 CYL	SPLINED NOSE LIP SEAL (LIGHT WEIGHT) 3 HOLES FOR PULLEY FITTING LONG NOSE (Gear Available)
MF09	85719 / ZZ90100 / Z90076 / 3637457M91 / 737189M91	4.212 / D4.212	4 CYL	SPLINED NOSE ROPE SEAL MF Tractor 100 Series (Italian) 174, 165, 174C Landini Tractor 500 series 6500
MF10	94430 / ZZ90077 / 3637453M91 / 742873M91 / 94430	4.212 / D4.212	4 CYL	SPLINED NOSE LIP SEAL
MF11	31323146 / 84433 / 026020N	6.305	6 CYL	KEYED NOSE LIP SEAL
MF11 L		6.305	6 CYL	KEYED NOSE LIP SEAL
MF12	U5BG0037 / ZZ90113 / 3637408M91	6.354 - 4 / 6.312 - 4	6 CYL	KEYED NOSE ROPE SEAL MF 399, 699, 1014, 1114, 1134, 1250, 2620, 2640, 2645, 2680, 2685, 2720, 2725, 3080, 3090, 3650 MF COMBINES 24, 27, 29, 29XP, 31, 530, 535, 560, 565, 620, 625, 660, 665, 750, 800, 805, 825 MF LANDINI R-DT1000, R-DT100005 R-DT12500, R-DT1300 MKII R-DT 14500 MKII PERKINS A6.354.4, A6.372.4
MF13	31314021 / 68076 / ZZ90086 / 3637404M91 / ZZ90113 / 748751M1	6.354 -4 A6. 354.4 T6. 354.4	6 CYL	KEYED NOSE LIP SEAL MF 2705, 3525, 3545, 3630, 3650 MF COMBINES 550, 750, 760, 850, 860 MF LANDINI R-DT1 4500, PERKINS A6.354.4, T6.354.4

PERKINS
FORGED

REF. NO.	ORIGINAL PART NO.	MOTOR & ENGINE	CYLINDERS	DESCRIPTION / REMARKS
MF13A	U5BG0035 / 313H021 / 3637019M91 / 3131H024	6.354 - 4 1006 / 1006T Phaser Series	6 CYL	KEYED NOSE LIP SEAL 3 HOLES FOR PULLEY FITTING
MF14	3131H022 / ZZ90105	6.354 - 4	6 CYL	NITRADED KEYED NOSE LIP SEAL
MF15	31322316 / 31322317 / 31325016 / 31322301 / 31325019 / 31322302 / 31325022 / 31322321 / 31325023 / 31322322 / 31325025 / 31322351 / 31325028 / 31322421 / 31325036 / 3132320V / 31325042 / 31323207 / U5BG0045 / 31323251 / ZZ90089 / 31322361 / 31322363 / 31322364 / 68063 / 85727 / 742150M1 / 736902M1	6.354 - 2	6 CYL	SPLINED NOSE ROPE SEAL MF 1100, 1014, 1200 MF COMBINES 500, 510, 515, 520, 525, 620, 625 MF LANDINI R - DT9500, R - DT10000, R - DT10005 PERKINS A6.354, PERKINS A6.354.1, A6.354.2, A6.372, A6.372.1
MF16	31323261 / U5BG0048 / 31323262 / ZZ90090 / 94443 / 94460 / 94468 / 742160M1 / 742161M1	6.354 - 4 A6.354.4 T6.354.4	6 CYL	SPLINED NOSE LIP SEAL MF 1100, 1014, 1200 MF COMBINES 500, 510, 515, 520, 525, 620, 625 MF LANDINI R - DT9500, R - DT10000, R - DT100005 PERKINS A6.354, PERKINS A6.354.1 A6.354.2, A6.372, A6.372.1
MF17	115256750, 115256990, P770, P771	104.22 / 404C.22 404C.22T	4 CYL	Stroke : 3.54331" (90.000mm) Rod : 2.04582 - 2.04626" (51.964 - 51.975mm) Main : 2.67550 - 2.67597" (67.957 - 67.970mm) Neck : Tapered, Threaded, Flange : Lip Seal
MF17A	115256750, 115256990	104.22 / 404C.22 404C.22T	4 CYL	Stroke : 3.9370" (100.00Dmm) Rod : 2.04582 - 2.04626" (51.964 - 51.975mm) Main : 2.67550 - 2.67597" (67.957 - 67.970mm) Neck : Tapered, Threaded, Flange : Lip Seal
MF18	4181V017	1103 / 1003B - 33 / 103C - 33T	4 CYL	Stroke : 5.000" (127.000mm) Rod : 2.4986 - 2.4994" (63.466 - 63.486mm) Main : 2.9982 - 2.9990" (76.155 - 76.176mm) Neck : Splined, 3 - Bolt, Flange : 6 - Bolt, 1 - Dowel, Lip Seal
MF19	ZZ90222, ZZ90239	1104	4 CYL	Stroke : 5.000" (127.000mm) Rod : 2.4986 - 2.4994" (63.466 - 63.486mm) Main : 2.9982 - 2.9990" (76.155 - 76.176mm) Neck : Splined, 3 - Bolt, Flange : 1 0 - Bolt, 1 - Dowel, Lip Seal
MF20	4225497M1, ZZ90213, ZZ90228, 3637019M1	VK1106 - E60TA	6 CYL	Stroke : 5.000" (127.000mm) Rod : 2.4986 - 2.4994" (63.466 - 63.486mm) Main : 2.9982 - 2.9990" (76.155 - 76.176mm) Neck : 3 - Bolt, 1 - Key,

ROMANIA / UTB / UNIVERSAL

FORGED

REF. NO.	ORIGINAL PART NO.	MOTOR & ENGINE	CYLINDERS	DESCRIPTION / REMARKS
UTB01	10303010	650	4 CYL	SMALL FLANGE ROPE SEAL
UTB02	10303020	660	4 CYL	BIG FLANGE LIP SEAL
UTB03	D03-C08-A	70 HP, M-85, 17, C-75, 17	4 CYL	MTZ - 70 / UMZ
UTB04 M12 M14	Z 1-100501143	T-25	2 CYL	M - 12 THREAD M - 14 THREAD
UTB05	D-371005011B	T - 40	4 CYL	INTEGRATED COUNTER WEIGHT.
UTB06	240-1005020-B1 240-1005015, 240-1005015-B 242-1005015, 243-1005015	80 H.P D-240, D242, D-243, D-244	4 CYL	MTZ - 80 MTZ - 82
UTB07	Z0-04 C9	SMD-20	4 CYL	JUMS 6M / SMD - 20 / DT 75 JOBS01 RUSSIAN, UKRAINE
UTB14	11503020 / 115030040 651878		3 CYL	MODEL NOS. 350, 353, 445, 450, 453, 500, 530, 533
UTB15	260-1005015	D260.1, D260.2, D260.4, D260.14, D266.4, D260.9	6 CYL	MTZ (MTZ -122 1, MTZ -1523), MAZ, KZS, Amkador
UTB16	245.9-1005015-08	D-245 Euro 3 (D245.9E3, D245.7E3)	4 CYL	without splines, 3 dowels, 7 flywheel holes (7 bolts) ZIL (5301), GAZ, PAZ - 4230 (cone)
UTB17	245-1005015 / 245-1005015-A	D245	4 CYL	MTZ - 892, MTZ - 92P, MTZ - 1025, MTZ -100, MTZ - 900, MTZ - 822, MTZ - 922, MTZ - 923, MTZ -1 005, MMZ- d-245, MMZ - d - 245 - 12, MMZ -d - 245 - 30e2 - 471, MMZ - d - 245 - 30e2-469, MMZ - d-245 -5c-53 - 92 1-2, MMZ - d - 245 - 5c-53, MMZ - d - 245 - 9
UTB18	5340.100501		4 CYL	YaMZ - 534 Autodiesel
UTB19	536.100501		6 CYL	YaMZ - 536 Autodiesel

SCANIA

FORGED

REF. NO.	ORIGINAL PART NO.	MOTOR & ENGINE	CYLINDERS	DESCRIPTION / REMARKS
SC01	342060 / 312739 / 1308467	DS 11-12-13 D / DN / DS / DSC11	4 CYL	T113 / R113 / H112 / HS112 / HW112 / L111 / L110 / 112 / 113 / 114 / BR115 / BR116 / B111 Stroke 145 mm
SC02	1423374 / 142156 1743584 / 574410	DSC 12 DC 12	6 CYL	P - R - T 380 / 420 / 440 / 470 / K124

SONALIKA
FORGED

REF. NO.	ORIGINAL PART NO.	MOTOR & ENGINE	CYLINDERS	DESCRIPTION / REMARKS
SO01	SK303521		3 CYL	Stroke 118 mm
SO02	EP403321		4 CYL	Stroke 118 mm

STEYR
FORGED

REF. NO.	ORIGINAL PART NO.	MOTOR & ENGINE	CYLINDERS	DESCRIPTION / REMARKS
ST01	4080020017		4 CYL	STEYR 8073 / 768 WD408.40
ST02	3080020029		3 CYL	STEYR 8043 / 8053 WD 308 - 46.3
ST03			3 CYL	360 KOMPACT

SUZUKI
FORGED

REF. NO.	ORIGINAL PART NO.	MOTOR & ENGINE	CYLINDERS	DESCRIPTION / REMARKS
SZ01	12221-75101 / 1221-75102 12221-75104	SJ - 410	4 CYL	SUZUKI 1000cc ENGINE MARUTI GYPSY SK410 CARRY
SZ02	12221-73001 / 1221-78401	LJ - 80	3 CYL	SUZUKI 800cc ALTO CARRY, SUZUKI F8

TATA
FORGED

REF. NO.	ORIGINAL PART NO.	MOTOR & ENGINE	CYLINDERS	DESCRIPTION / REMARKS
TA01			6 CYL	TATA 1516 / 1612
TA02			6 CYL	TATA 1510 / 1312
TA03			6 CYL	TATA 697
TA04			4 CYL	TATA 609 / 709 / 1109
TA05			4 CYL	TATA 608 / 497
TA06			6 CYL	TATA 1210 / 692
TA07			4 CYL	TATA 407

TOYOTA
FORGED

REF. NO.	ORIGINAL PART NO.	MOTOR & ENGINE	CYLINDERS	DESCRIPTION / REMARKS
TY01			4 CYL	Bandeirant 1973 to 1989 LAND CRUISER
TY02			4 CYL	Bandeirant 1989 to 1994

URSUS
FORGED

REF. NO.	ORIGINAL PART NO.	MOTOR & ENGINE	CYLINDERS	DESCRIPTION / REMARKS
UR360A	46.40399.0 3S- 4003		4 CYL	URSUS 360 (ZETOR TYPE) 6 HOLES ON REAR- C 360 Available as integrated and external counter weight

VOLVO
FORGED


REF. NO.	ORIGINAL PART NO.	MOTOR & ENGINE	CYLINDERS	DESCRIPTION / REMARKS
VO01	1545657 / 467709 6888669 / 819449E 8966716		6 CYL	TD and THD 100 / 101 / 102 engines Trucks N 10/NL 280 / 310 / 320 / 340 Chassis w / bus B 58 / B 10M / F 10 - N10 Stroke 140 mm Flange with 10 holes
VO02	812 67 80 819 43 04 (OLD) 819 44 56 812678		6 CYL	TD 101 / 102 / 103 THD 102 TD motors 102 and THD S Trucks NL 310 / 320 / 340 Chassis w / bus B 58 / B 10M Flange with 14 holes Stroke 140mm
VO03	468617 / 470681 688 87 40 / 470681- 8		6 CYL	TD 120, TD 121, TD 122, TD 123 (>186746 ENGINES) Trucks N / NL 12 - EDC 360 / 420 Chassis p / B bus 12M, F12 - N12 Flange with 10 holes Stroke 150mm
VO04	612 55 83 / 819 37 27 478676 / 8125583		6 CYL	TD 122 / TD 123 engines ENGINE NO (186747>) Trucks NL 12 360 / 360 / 420 EDC Chassis p / B bus 12M, F12 - N12 Flange with 14 holes Stroke 150 mm
VO05	1547468, 20411189, 20533089, 8418524	D12 / D12A / D12C / D12	6 CYL	Stoke 150mm FH12 - 420 CV / NH 380 / 420 / 460 / B12
VO06	20486222, 22235114, 21230583, 85000536, 20486221, 22697519	D13 / D13C	6 CYL	Stroke 158 mm FH / FMX

WILLYS JEEP
FORGED

REF. NO.	ORIGINAL PART NO.	MOTOR & ENGINE	CYLINDERS	DESCRIPTION / REMARKS
WJ01	647018		4 CYL	COUNTER WEIGHT FASTENED WITH BOLTS CJ3A, CJ3B, CJ5, CJ6, M38, M38A, DJ3I, Station Wagon, 4X463, 473, 4X473, 475, 2X475, 4X475, Trucks 4WO, 473-440, 475-4WO, FC150, L134, F134

ZETOR				FORGED
REF. NO.	ORIGINAL PART NO.	MOTOR & ENGINE	CYLINDERS	DESCRIPTION / REMARKS
ZT01	20010301		2 CYL	ZETOR 2011 CZECHOSLOVAKIA Available as integrated and external counter weight
ZT02	30010301		3 CYL	ZETOR 3011 CZECHOSLOVALIA Available as integrated and external counter weight
ZT03	40010301 / 40010399 / 72010399		4 CYL	ZETOR 4011 CZECHOSLOVALIA UR1 Series 4011, 4320, 4321, 4340, 4341, 4511, 4611, 5320, 5321, 5340, 5341, 5511, 5516, 5545, 5611, 5645, 5647, 5711, 5718, 5745, 5748, 5911, 5945, 6011, 6045, 6211, 6245, 6320, 6321, 6340, 6341, 6711, 6718, 6745, 6748, 6911, 6945, 7011, 7045, 7045H, 7211, 7245, 7245H, 7320, 7321, 7340, 7341, 7711, 7745. Available in 110 / 120 mm stroke. Available as integrated and external counter weight
ZT03HD	URSUS - C 385		4 CYL	HEAVY DUTY (URSUS II)
ZT04	URSUS - C 910		6 CYL	ZETOR INTEGRATED COUNTER WEIGHT C 380
ZT04HD			4 CYL	HEAVY DUTY (URSUS II)
ZT05	78003001		4 CYL	CRANKSHAFT PROXIMA
ZT06	96003001		4 CYL	CRANKSHAFT PROXIMA

GUARANTEE POLICY

English:- Garantie 

We guarantee that all the goods that have been manufactured by us are free from defects in material and workmanship. We further guarantee that all the parts that are defective in material and workmanship are repairable and/or interchangeable. Any replaced parts will be our property. The obligation under this warranty does not include the refunding of these losses - Loss of profit, assembly expenses, customs charges, inland freight, all local charges etc.. We shall not be responsible for the wear out and / or the defects that arise in the transit and/or in the case that any alteration is carried out on the goods shipped by us, we will not be responsible for the defects weather it is due to the alteration or not. We shall also not be liable for the treatment of the shipped goods that is not in accordance with our regulations regarding its use. We further warranty that all our goods are interchangeable with the corresponding parts offered by the Original Equipment Manufacturer. All claims have to be submitted to us in writing within 12 months from the shipment of the goods and material may not be returned to us without our prior consent. In any case, they have to be returned to us free of charge and freight charges will only be returned if the claim is found justified after inspection of the goods by our quality control department.

Español: - Garantía 

Garantizamos que todas las mercancías que han sido fabricadas por nosotros están libres de defectos en material y mano de obra. Garantizamos más lejos que todas las piezas que son defectuosas en material y mano de obra son reparables y/o permutables. Cualquier pieza substituida será nuestra característica. La obligación bajo esta garantía no incluye consolidar de estas pérdidas - pérdida de beneficio, de costos del ensamblaje, de cargas de costumbres, de carga interior, de todas las cargas locales etc.. No seremos responsables del desgaste hacia fuera y/o los defectos que se presentan en el tránsito y/o en el caso que cualquier alteración está realizada en las mercancías enviadas por nosotros, no seremos responsables de los defectos que les ístimos somos debido a la alteración o no. También no seremos obligados para el tratamiento de las mercancías enviadas que no está de acuerdo con nuestras regulaciones con respecto a su uso. Fomentamos la garantía que todas nuestras mercancías son permutables con las piezas correspondientes ofrecidas por el fabricante de equipos originales. Todas las demandas tienen que ser sometidas a nosotros en escribir en el plazo de 12 meses del envío de las mercancías y el material no se puede volvernos sin nuestro consentimiento previo. En cualquier caso, tienen que ser vueltas gratuitamente y las cargas de carga serán vueltas solamente si la demanda se encuentra alineada después del examen de las mercancías por nuestro departamento del control de calidad.

Deutsch:- Garantie 

Garantieren wir, daß alle Waren, die von hergestellt worden sind uns, von den Defekten Material und Kunstfertigkeit frei sind. In wir weiter garantieren, daß alle Teile, die Material und Kunstfertigkeit defekt sind, reparabel und/oder auswechselbar sind. Alle mögliche ersetzten Teile sind unsere Eigenschaft. Die Verpflichtung unter dieser Garantie umfaßt nicht das Zurückstellen dieser Verluste - Verlust des Profites, der Versammlung Unkosten, der Zollgebühren, der inländischen Fracht, aller Ortsgebühren etc.. Wir sind nicht für die Abnutzung heraus verantwortlich und/oder die Defekte, die bei dem Transport und/oder im Fall entstehen, daß jede mögliche Änderung auf den Waren durchgeführt wird, die von uns versendet werden, sind wir nicht für die Defekte verwittern sie liegen an der Änderung oder nicht verantwortlich. Wir auch sind nicht für die Behandlung der versendeten Waren verantwortlich, die nicht mit unseren Regelungen betreffend sind seinen Gebrauch übereinstimmt. Wir fördern Garantie, daß alle unsere Waren mit den entsprechenden Teilen auswechselbar sind, die durch den Originalgerätehersteller angeboten werden. Alle Ansprüche müssen bei uns beim Schreiben innerhalb 12 Monate vom Versand der Waren eingelegt werden und Material kann möglicherweise nicht zu uns ohne unsere vorherige Zustimmung zurückgebracht werden. In jedem möglichem Fall müssen sie zu uns kostenlos zurückgebracht werden und Frachtgebühren werden nur zurückgebracht, wenn dem Anspruch ausgeschlossen nach Kontrolle der Waren durch unsere Qualitätskontrolleabteilung gefunden wird.

Русский: Гарантия. 

Мы гарантируем, что все наши изделия произведены без каких-либо дефектов металла и производства. В случае обнаружения дефекта металла или производства производится замена детали или ее ремонт. Замененные дефектные детали перейдут в собственность завода. Обязательства по данной гарантии не распространяются на следующие случаи - потеря дохода, расходы на установку, таможенные платы, транспортировка внутри страны покупателя, все местные выплаты и т.д. Мы также не несем ответственность за любые типы повреждений, полученные в результате транспортировки, неправильной погрузки. Мы подтверждаем, что все произведенные заводом детали заменяемы на соответствующие детали от производителя техники. Все жалобы должны быть высланы нам в течение 12 месяцев с даты погрузки, дефектные детали не могут быть высланы нам без нашего предварительного согласия. В любом случае, дефектные детали должны быть доставлены на завод бесплатно и транспортные издержки будут возвращены покупателю в том случае, если жалоба будет подтверждена после проверки изделий заводским департаментом качества.

Française:- Garantie 

Nous garantissons que toutes les marchandises qui ont été fabriquées par nous sont exemptes des défauts dans le matériel et l'exécution. Nous garantissons plus loin que toutes les pièces qui sont défectueuses dans le matériel et l'exécution sont réparables et/ou interchangeables. Toutes les pièces remplacées seront notre propriété. L'engagement sous cette garantie n'inclut pas le remboursement de ces pertes - manque à gagner, des dépenses d'assemblage, des frais de douane, le fret intérieur, tous frais locaux etc.. Nous ne serons pas responsables de l'usage dehors et/ou les défauts qui surgissent dans le passage et/ou dans le cas que n'importe quel changement est effectué sur les marchandises expédiées par nous, nous ne serons pas responsables des défauts lui survivons est dû au changement ou pas. Nous ne serons également pas responsables du traitement des marchandises expédiées qui n'est pas conforme à nos règlements concernant son utilisation. Nous promouvons la garantie que toutes nos marchandises sont interchangeables avec les pièces correspondantes offertes par fabricant. Toutes les réclamations doivent être soumises à nous par écrit dans les 12 mois de l'expédition des marchandises et le matériel ne peut nous être retourné sans notre assentiment préalable. De toute façon, elles doivent nous être retournées gratuitement et le coût du fret sera seulement retourné si la réclamation est trouvée justifiée après inspection des marchandises par notre service de contrôle de qualité

Turkish : Garanti Sartları 

Tarafimizdan üretilen tüm malların malzeme ve işçilik açısından kusursuz olduğunu garanti ederiz. Malzeme ve işçilikte hatalı olduğu tesbit edilen malların onarımını ve/veya birbiriyle değişimini de garanti ederiz. Registirelen mallar bize aittir. Bu garanti kapsamına şu kayıplar girmez: Kar Kaybı, montaj masrafları, gümrük ücretleri, yurtiçi navlun, tüm yerel ücretler v.s.. Tarafimizdan Yüklenmiş mallarda nakliye esnasında meydana gelen hasar ve/veya hatalardan ve/veya degisiklige ugramis mallardan sorumlu olmayacagiz. Gönderilmiş olan malların kullanımı esnasında kullanma talimatları dışında işlem uygulanırsa yine sorumlu olmayacagiz. Tüm mallarımızın (OEM) orijinal parça üreticisi tarafından sunulan parçalara kabul ettiğini ve onlarla degistirilebilir olduğunu garanti ederiz. Her türlü hak talebi, malların yüklenmesini takip eden 12 ay içerisinde tarafımıza yazılı olarak beyan edilmeli ve önce bizim muvafakatimiz alınmadan malzeme geri gönderilmemelidir. İade durumunda, mallar bedelsiz olarak gönderilecek ve yükleme masrafları ancak kalite kontrol departmanımızda yapılacak inceleme sonucunda talep haklı bulunursa geri ödenecektir.



COMPANY WEBSITE



COMPANY MOVIE

BALU FORGE INDUSTRIES LTD (BFIL)

HEADQUARTERS

506, Imperial Palace, 45, Telly Park Road,
Andheri (E), Mumbai - 400069, Maharashtra.
T: +91-26839916 | F: +91-22-26842860 | M: +91-9060303006
sales@baluindustries.com | info@baluindustries.com



www.baluindustries.com



PLANT ADDRESS UNIT 1

43 - B, Kakti Industrial Area, Kakti,
Belgaum - 591113, Karnataka, India.

PLANT ADDRESS UNIT 2

44 - A, Kakti Industrial Area, Kakti,
Belgaum - 591113, Karnataka, India.

PLANT ADDRESS UNIT 3

428/1, Next to Aequs SEZ, Hattargi Village,
Taluk Hukkeri - 591243, Karnataka, India.

PLANT ADDRESS UNIT 4

LV-21 - Hamriyah Free Zone Sharjah,
United Arab Emirates.